



Holderness Academy
& Sixth Form College



THE CONSORTIUM
ACADEMY TRUST



Moving Up

2022/23

A helpful guide for students

Find the nth term for the following:

5 9 15 23 33 n^{th} term =

12 19 28 39 n^{th} term =

0 5 12 21 32 n^{th} term =

2 8 16 25 38 n^{th} term =

7 11 17 25 n^{th} term =



Explorer
Aspirational



Scholar
Resilient



Learn
Respected



THE CONSORTIUM
ACADEMY TRUST

Shaping Positive Futures

Welcome

Welcome to our new Holderness students.

Holderness Academy & Sixth Form College is part of The Consortium Academy Trust. At The Consortium Academy Trust, we are ambitious about the future - creating learning environments and excellence in teaching and learning that provide our children and young people with the best chance at a successful future.

Our vision is **Shaping Positive Futures** as we strongly believe our sole purpose is supporting children and young people to achieve their ambitions. This vision gives us a shared sense of purpose and direction and is something we are all proud to be a part of.



Across our community of nine schools our people are doing remarkable things by being fully engaged in work that transforms lives, supporting children and young people to grow in confidence and develop into citizens we are proud of.

We are ambitious to shape positive futures so each young person can excel and achieve their goals in education and beyond and we welcome you as you begin to explore and develop your interests and passions at the start of your education journey with us.

Lizann Lawson
CEO The Consortium Academy Trust

www.consortiumtrust.co.uk



We are ambitious to shape positive futures so each young person can excel and achieve their goals in education and beyond and we welcome you as you begin to explore and develop your interests and passions at the start of your education journey with us.





Aspirational
Resilient
Respectful
Kind

Contents

- 04 Welcome to Holderness
- 06 Key People
- 07 What is Transition Week?
- 08 Holderness Learners
- 10 Community Expectations
- 11 The Holderness Learner Journey
- 12 Attitude of a Holderness Learner
- 14 Holderness Communicator
- 15 Literacy
- 16 Academy Uniform
- 17 PE Kit
- 18 Academy Day
- 19 Example Timetable
- 20 Arriving by Bus
- 22 What Equipment Will I need?
- 23 School Gateway
- 24 Rewards
- 26 Extracurricular
- 27 Students' & Parents' Thoughts
- 28 Student Well-being
- 29 Learning Support
- 30 Important Places
- 32 What's Next?
- 34 Website



Welcome to Holderness



Welcome to Holderness Academy & Sixth Form College! We are delighted that you will be joining our school community as a Year 7 student in September.

We know you have a lot to concentrate on in your final few weeks at primary school and we hope that you enjoy the summer term. We imagine that over the coming weeks you will also have a chance to think about what your time at secondary school will be like.



Our vision is 'To inspire and empower young people to make a positive difference today; ready for tomorrow' and we have lots of people in place to support you as you join us on your journey to become a Holderness Learner.





Aspirational
Resilient
Respectful
Kind

For some of you this will be exciting and for others a very anxious time, so here at Holderness, our students and Year teams have prepared this 'Moving Up' guide just for you and all the other students like you who are joining us in September.

Whether you are moving up with lots of friends or are the only person coming from your school, don't worry! The 'Moving Up' guide will help answer lots of your questions about starting at Holderness, what to expect and what you will need. It might be a good idea to find time to sit down with the adults in your home and have a chat with them about it too.

Our vision is *'To inspire and empower young people to make a positive difference today; ready for tomorrow'* and we have lots of people in place to support you as you join us on your journey to become a Holderness Learner.

If you have any queries, please email us at **year6transition@holderness.academy**. We are really looking forward to meeting you and ensuring you become a valued part of our school community.

From all the staff at Holderness Academy & Sixth Form College



Key People



Mr Cannon
Interim Headteacher

If you have any queries regarding your son/daughter's transition process into Year 7 please do not hesitate to contact us via email: learningsupport@holderness.academy

Our SENDCO is Mrs Ashbridge and can be contacted via an appointment in the SENDCO Surgery.

The Emotional Literacy Support Assistant is Mrs Jones.



Miss Jennings
Attendance and Welfare Manager



Mrs Painter
Progress Leader



Mrs Day
Pastoral Manager



Mrs Ashbridge
*Assistant Headteacher
Safeguarding and Inclusion*



Mr Briggs
*Assistant Headteacher
Culture and Climate*



Mrs Ruston
Safeguarding Manager



What is Transition Week?



We believe that students benefit greatly by getting to know us prior to their official start in September.

Our induction process has been designed to ensure students adjust well into their new setting, encouraging them to begin secondary education with a positive attitude to learning.

Now that you are confirmed as a Holderness student, we will write to you and your parents regularly with information about your new school.

This builds up to the highlight of the induction process - Transition Week, which takes place **W/C Monday 11 July 2022.**

Over this week, you will attend Holderness Academy & Sixth Form College, attend lessons, meet new tutor and find your way around.

You will get to know lots of new people and find out just what it is like to be a student here.

We are very excited about it – we hope you are too!



Holderness Learners



Explorer

Aspirational

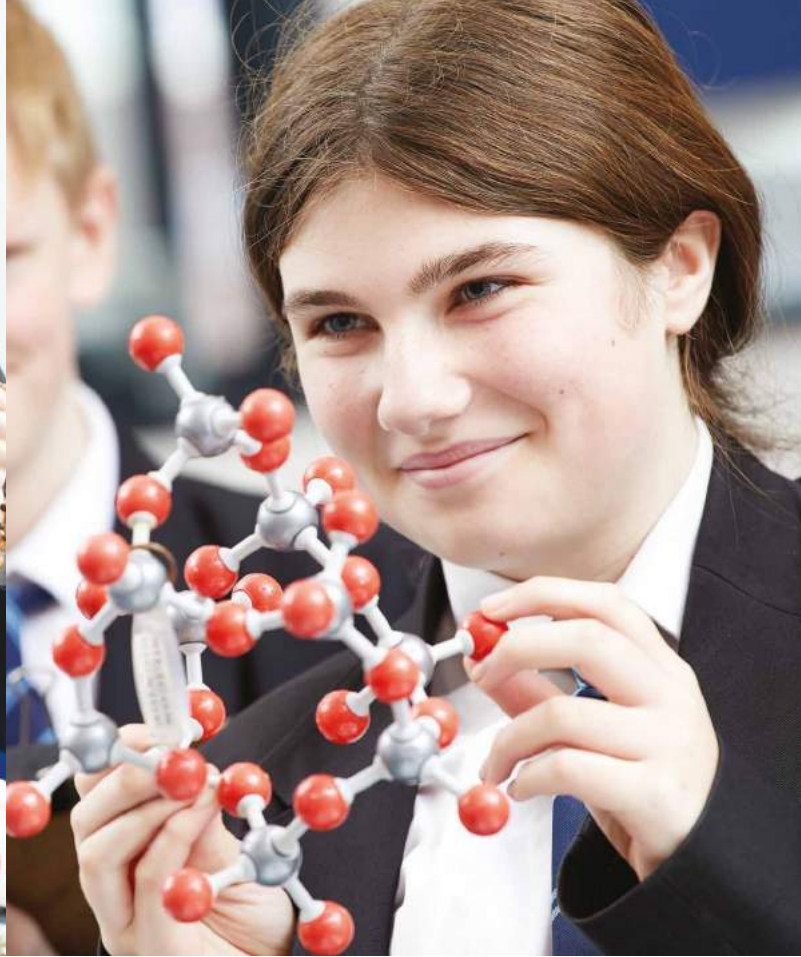
We aim high, complete all work to the best of our ability and support others to achieve the same.



Scholar

Resilient

We arrive on time to all lessons with the correct uniform, equipment and ready for learning. We never give up and we love a challenge.



To inspire and empower young people to make a positive difference today; ready for tomorrow.



Leader

Respectful

We respect ourselves, all members of our school and wider community, following instructions without question or answering back.



Collaborator

Kind

We value good manners. We are friendly, generous and considerate.

The Holderness Learner **Community** Expectations



Explorer

Aspirational

We are dedicated to our own personal development, attending extra-curricular activities with pride.



Scholar

Resilient

We display grit and determination over time in order to fulfil our potential.



Leader

Respectful

We respect ourselves, others and the Academy environment. We walk on the left-hand side of the corridor in a calm and orderly manner. We are tolerant of others' space, feelings and beliefs.



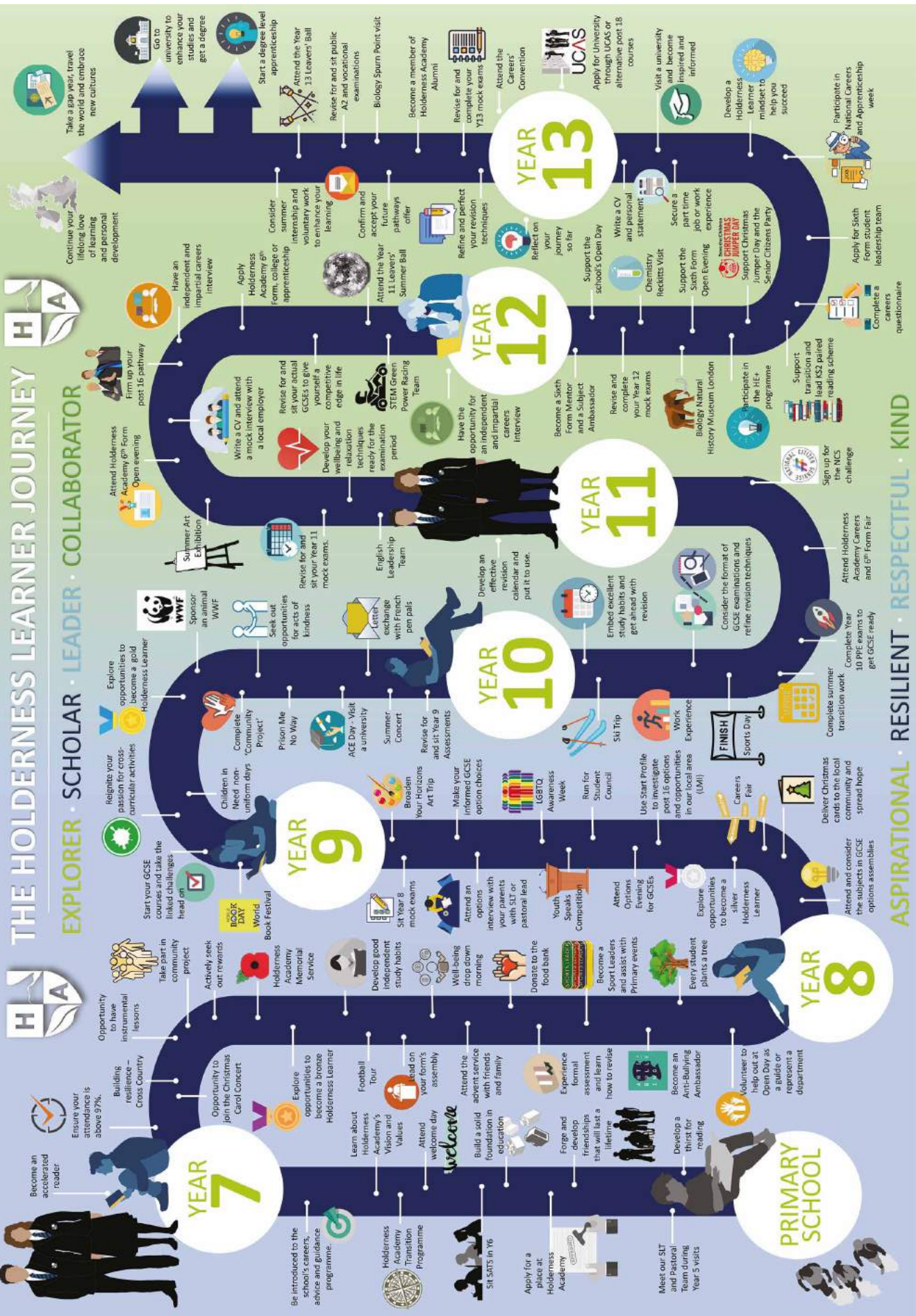
Collaborator

Kind

We value our local and Academy community. We are confident and enthusiastic when communicating with one another.

THE HOLDERNESS LEARNER JOURNEY

EXPLORER · SCHOLAR · LEADER · COLLABORATOR



ASPIRATIONAL · RESILIENT · RESPECTFUL · KIND

Attitude of a Holderness Learner

Classroom teachers are asked to report home twice per year. At each collection teachers will report one score reflecting a student's learning and one score for their behaviour.

LEARNING

Excelling

3

You enthusiastically engage in all lessons with confidence, consistently demonstrating a positive attitude. You are resilient, hardworking and adventurous, regularly attempting more difficult challenges. You actively reflect on previous work in an ambitious attempt to make outstanding progress. You aspire to achieve and articulate your opinions

Engaging

2

You enthusiastically engage in most lessons with confidence, demonstrating a positive attitude. You are generally resilient, hardworking and adventurous, regularly attempting more difficult challenges. You do reflect on previous work in an attempt to make good progress. You aspire to achieve and can articulate your opinions independently and collaboratively. You either lead or are a key participant in group work.

Variable

1

You have the potential to enthusiastically engage in most lessons, but you do not consistently demonstrate a positive attitude. You can be resilient, hardworking and adventurous, regularly attempting more difficult challenges but too often you are happy to coast and complete the minimum amount of work. You generally do reflect on previous work in an attempt to make good progress but on occasions you give up too easily. You have shown an aspiration to achieve and you can articulate your opinions independently and collaboratively but this needs to happen every lesson. You do take part in group work but rarely lead. Your confidence would improve if you applied yourself fully in every lesson.

Disengaging

0

You do not enthusiastically engage in many lessons demonstrating a negative attitude to learning. You are rarely resilient, hard working or adventurous. You are not focused on your learning and rarely completing work to an acceptable standard. You do occasionally reflect on previous work in an attempt to make good progress but give up too easily. You have shown an aspiration to achieve sporadically and you can articulate your opinions independently and collaboratively, but this happens very rarely. You do not lead or take part in group work in an effective way. Your confidence would improve if you applied yourself fully in every lesson.

We aim to deliver a broad aspirational curriculum alongside enriching extracurricular provision. We are eager to provide students with tangible, genuine and invaluable experiences by working with our local community. We endeavour to consistently herald the qualities that we recognise as being essential for the future success of the Holderness Learner; Aspiration, Resilience, Respect and Kindness.

BEHAVIOUR

3

Excelling

You display exemplary behaviour for learning, allowing yourself and others to learn. You are kind, respectful, tolerant and show a high level of care for the wellbeing of others. You are proud of your work and wear the Holderness Academy uniform with pride. You are honest, punctual and ready to learn with the expected equipment independently and collaboratively. You often lead or play a very active role in group work.

2

Engaging

You display good behaviour for learning, allowing yourself and others to learn. You are kind, respectful, tolerant and show a good level of care for the wellbeing of others. You are proud of your work and wear the Holderness Academy uniform with pride. You are honest, punctual and ready to learn with the expected equipment.

1

Variable

You display some unwanted behaviours which are to the detriment of yours and others progress. You show some disregard for other people's views and opinions. You are occasionally distracted and not always kind, respectful, tolerant and show an inconsistent level of care for the wellbeing of others. You need to show more pride in your work and be proud to wear the Holderness uniform. There may be issues with honesty, punctuality and being ready to learn with the expected equipment.

0

Disengaging

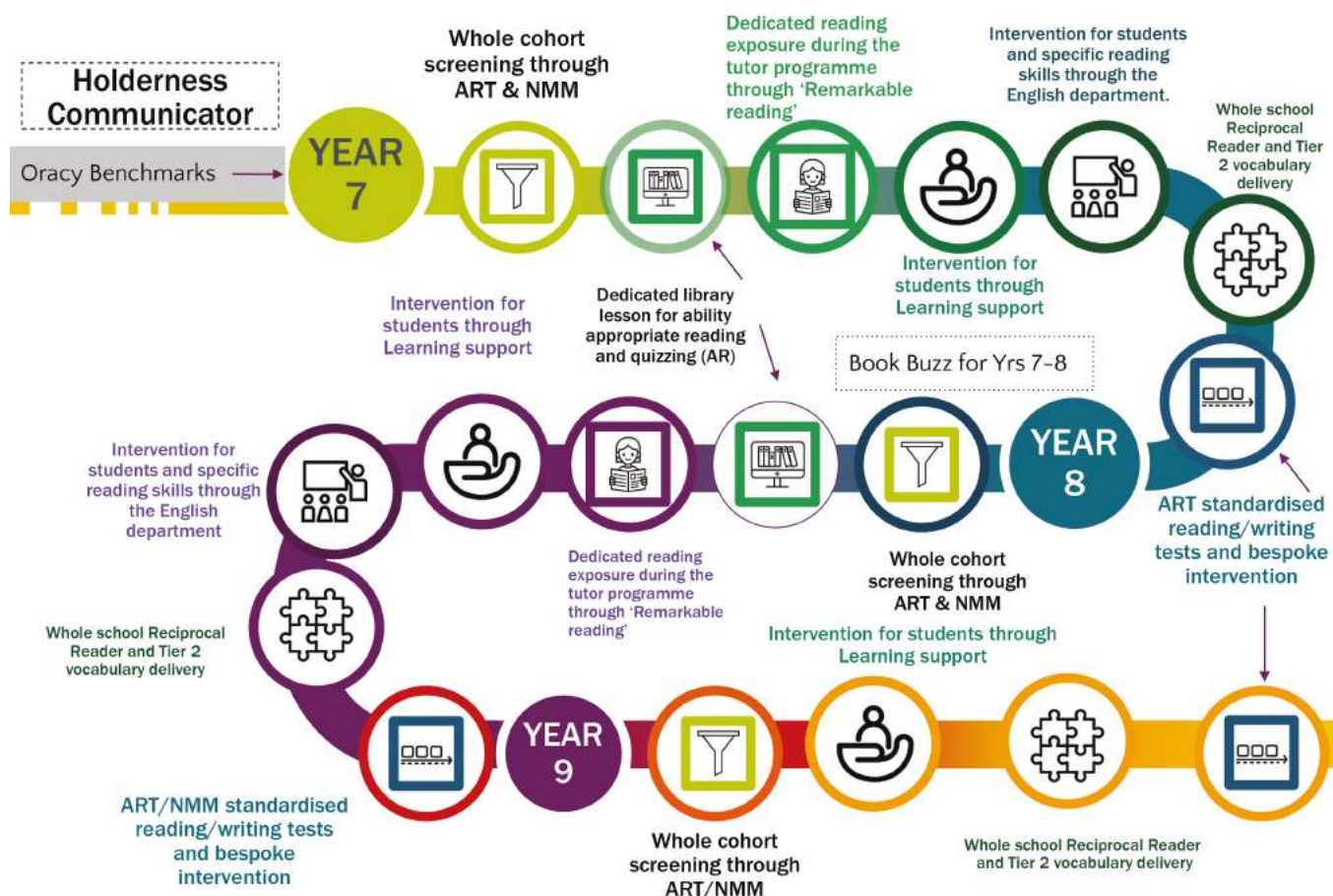
You display unwanted behaviours which affect the teaching and learning of too many lessons. Support and intervention is frequently required. You are easily distracted and not always kind, caring, respectful or tolerant of others. You show disregard for other people's views and opinions. You need to show more pride in your work and be proud to wear the Holderness uniform. It is likely there are issues with honesty, punctuality and being ready to learn with the expected equipment.

Holderness Communicator

The Holderness Communicator initiative is a collective responsibility to enable the Holderness Learner to possess articulate communication skills:

- recognise how “talk matters” and use “talk” as a means of understanding subject content
- be able to read and access academic texts whilst being a strategic reader
- be able to access and use academic language

Holderness Communicator Map



Literacy

Our approach to literacy is that of shared responsibility within all subject areas (known as disciplinary literacy) and students should be exposed to opportunities to develop Holderness Communicator skills in every lesson across the curriculum.

Students are encouraged to demonstrate oracy skills in every lesson and the following roles are useful starting points:



Instigator

Starts the discussion or opens up a new topic for discussion

Will say:

I would like to start by saying ...
I think we should consider ...
We haven't yet talked about ...
Let's also think about ...



Clarifier

Simplifies and makes things clearer by asking questions

Will say:

What do you mean when you say ...?
Can you explain a bit more about ...?
Does that mean ...?
Please can you clarify what you meant by ...?



Prober

Digs deeper into the argument, asks for evidence or justification of ideas

Will say:

What do you think would be the effect of ...?
Why do you think ...?
Can you provide an example to support what you are saying?



Challenger

Gives reasons to disagree or presents an alternative argument

Will say:

I disagree with you because ...
You mentioned X but what about ...
To challenge you X, I think ...
I understand your point of view, but have you thought about ...?



Summariser

Identifies the main ideas from the discussion. This might be during the discussion, to help move the conversation forward, or at the end of the discussion.

Will say:

Overall, the main points were ...
The main ideas raised today were ...
Our discussion focused on ...
The three main things we talked about were ...



Builder

Develops, adds to or runs with an idea

Will say:

I agree, and would like to add ...
Building on that idea, I think ...
Linking to what X said, I think..

☆ Academy Uniform ☆

The wearing of uniform gives every student a sense of identity, equality and discipline as a member of the academy community.



Shirt: plain white, loose fitting.

Blazer: black with academy logo.

Tie: must be worn.

Optional jumper: V-neck with academy logo.

Trousers: plain black, full length, waist high, tailored.

Skirt: plain black knee length flared, pleated or A line (no Jersey/tube skirts). To be worn with plain black tights.

Shoes: plain black polishable leather or leather look. No logos. No suede material. No air bubbles.

The uniform encourages students to feel a sense of pride and a sense of belonging to the academy.

In addition the uniform sets clear expectations, ensures health and safety and provides a conducive learning environment for all students in preparation for their future working life.

If at any time there are any queries regarding permitted styles, parents/carers should contact the academy, particularly prior to purchasing garments.

If any parents/carers are experiencing difficulties regarding the uniform, please contact the academy without delay.



Jewellery/Piercing

One small, metal stud may be worn in each ear. No other jewellery or studs in body should be worn.

Makeup

Must not be worn in school (including nail varnish, acrylic or false nails and false eyelashes).

Hairstyles

Extremes of unnatural hair colour will not be accepted. stripe/patterns, mohican or mohawk styles are not permitted.

☆ PE Kit ☆



Royal blue T-shirt: with academy logo.

Royal blue training top/sweatshirt: with academy logo.

Navy blue shorts

Navy blue tracksuit bottoms/leggings

Trainers and football/rugby/hockey boots: with plastic or moulded studs.

**Our uniform supplier is
Rawcliffes of Hull.**
www.rawcliffes.co.uk

Uniform items can be purchased from
Rawcliffes, either online or in store.
9/11 Paragon Street, Hull, HU1 3RJ
Tel: 01482 223539 Email: info@rawcliffes.co.uk

Academy ★ Day ★

Each day is split up into separate periods. You will have tutorial periods throughout the week.

08:35 - 08:50	Assembly or Tutor Time
08:55 - 09:55	Period 1
10:00 - 11:00	Period 2
11:00 - 11:15	Break
11:20 - 12:20	Period 3
12:20 - 12:50	Lunch
12:55 - 13:55	Period 4
14:00 - 15:00	Period 5
15:00 - 16:00	Period 6 Learning Sessions

Period 6 Learning Sessions Late buses will be available on Monday, Tuesday and Wednesday.



Example Timetable

When you start, you will be given two timetables, one for Week A and one for Week B which will tell you which classes you have and when they are.

Period

Day

Subject

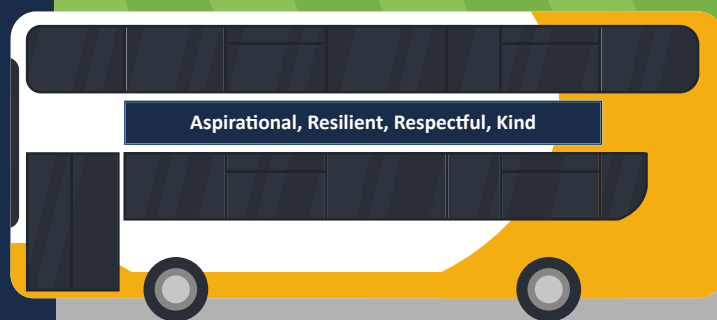
	MON	TUE	WED	THU	FRI
1	Des Tech LA 7a/DT3 D6	English TAU 7a/En2 E4	Science AFA 7a/Sg2 39	History DBE 7a/Hi2 2	Art TH 7a/DT3 D11
2	Des Tech LA 7a/DT3 D6	Maths PCL 7a/Ma2 M11	Maths PCL 7a/Ma2 M11	English TAU 7a/En2 E4	Physical Education DBE 7a/Pe1
3	Science LHO 7a/Sg2 42	History DBE 7a/Hi2 2	Geography JTU 7a/Gg2 2	Geography JTU 7a/Gg2 2	MFL LY 7a/Lg2 1
4	Maths MFI 7a/Ma2 M6	Ethics and Philosophy EMC 7a/Et2 8	Music EMC 7a/Mu1 13	Maths MFI 7a/Ma2 M6	English TAU 7a/En2 E4
5	MFL MFI 7a/Ma2 M6	Physical Education DBE 7a/Pe1	English TAU 7a/En2 E4	Science AFA 7a/Sg2 E4	Computer Science KSE 7a/Co2 48

Class band group

Teacher

Room

Arriving by Bus



One of the biggest changes you might face is how you travel to school. Some students walk or cycle, but a considerable number of our students travel by bus.

The buses cover a large geographic area and run in the morning and evening. They will bring you to the academy “Bus Park” in plenty of time for the start of the learning day.

We also run three late buses every week so there is no excuse not to get involved in after school clubs! For more information about our bus service partnership with Ellie Rose and East Riding Council, please visit: www.eastriding.gov.uk

HA1

Service provided by Ellie Rose Travel

Victoria Dock	07:40	Holderness Academy & Sixth Form College	15:10
Southcoates Fire Station		Longhill Shops	
Preston Road Old Library		Staveley Road	
Staveley Road		Preston Road Old Library	
Longhill Shops		Southcoates Fire Station	
Holderness Academy & Sixth Form College	08:25	Victoria Dock	15:55

HA2

Service provided by Ellie Rose Travel

Home Bargains	07:45	Holderness Academy & Sixth Form College	15:10
East park		Swiss Cottage	
Apollo		Longhill Shops	
Longhill Shops		Apollo	
Swiss Cottage		East Park	
Holderness Academy & Sixth Form College	08:25	Home Bargains	15:50

Service 15

Service provided by Ellie Rose Travel

Skeffling, Main St, Bus Stop (2021/2022 only)	07:45	Holderness Academy & Sixth Form College	15:10
Patrington, Westgate, Bus Stop	07:54	Thorngumbald, Newsagents, Main Rd, Bus Stop	15:18
Ottringham, Bus Stop, Opposite Zaras	07:54	Camerton, Main Road, Bus Stop	15:20
Keyingham, Main Road, Bus Stop	08:04	Ryehill, Triangle	15:22
Ryehill, Triangle	08:08	Keyingham, Main Road, Bus Stop	15:26
Camerton, Main Road, Bus Stop	08:10	Ottringham, Zaras (White Horse Pub)	15:29
Thorngumbald, Newsagents, Main Rd Bus stop	08:12	Patrington, Westgate, Bus Stop	15:36
Holderness Academy & Sixth Form College	08:20	Skeffling, Main St, Bus Stop (2021/2022 only)	15:47

Service 2SA

Service provided by Ellie Rose Travel

Elstronwick, Back Lane	07:55	Holderness Academy & Sixth Form College	15:10
Burstwick, Dairy House Lane	08:00	Thorngumbald, Main Road, Royal Mail Pub	15:19
Burstwick, Main Street, Hare & Hound	08:07	Burstwick, Main Street, Hare & Hound	15:23
Thorngumbald, Main Road, Royal Mail Pub	08:11	Elstronwick, Back Lane	15:35
Holderness Academy & Sixth Form College	08:20	Burstwick, Dairy House Lane	15:40

Service 2SB

Service provided by Ellie Rose Travel

Elstronwick, Fieldend Lane	07:56	Holderness Academy & Sixth Form College	15:10
Burton Pidsea - New Road	07:59	Thorngumbald, Royal Mail Pub	15:19
Burstwick, Main Street, Hare & Hound	08:07	Burstwick, Hariff Lane, Tower House	15:21
Burstwick, Hariff Lane, Tower House	08:09	Burstwick, Hare & Hound	15:23
Thorngumbald, Main Road, Royal Mail	08:12	Burton Pidsea - New Road	15:33
Holderness Academy & Sixth Form College	08:20	Elstronwick, Fieldend Lane	15:35

Service 3S

Service provided by Ellie Rose Travel

Paull, Main Street, Paull Primary School	08:01	Holderness Academy & Sixth Form College	15:10
Thorngumbald, Hooks Lane	08:07	Thorngumbald, Royal Mail Pub	15:23
Holderness Academy & Sixth Form College	08:20	Burstwick, Hariff Lane, Tower House	15:29

Service 5S

Service provided by Sioux Travel

Humbleton, New Lane, Bus Shelter	08:05	Holderness Academy & Sixth Form College	15:10
Lelley, Humbleton Road, The Stags Head Inn	08:10	Lelley, Humbleton Road, The Stags Head Inn	15:20
Holderness Academy & Sixth Form College	08:20	Humbleton, New Lane, Bus Shelter	15:25

Service 7S

Service provided by Ellie Rose Travel

Aldbrough, Church Street, Bus Stop	07:55	Holderness Academy & Sixth Form College	15:10
Flinton, Main Road, Bus Stop	08:00	Wyton, Main Road, Bus Stop	15:20
Sproatley, Main Road, Blue Bell Inn	08:06	Sproatley, Main Road, Post Office	15:22
Sproatley, Main Road, Post Office	08:08	Sproatley, Main Road, Blue Bell Inn	15:24
Wyton, Main Road, Bus Stop	08:10	Flinton, Main Road, Bus Stop	15:30
Holderness Academy & Sixth Form College	08:20	Aldbrough, Church Street, Bus Stop	15:35

Service 8S

Service provided by Ellie Rose Travel

Rise, Rise Hall	07:50	Holderness Academy & Sixth Form College	15:10
Skirlaugh, Main Street, Duke of York Pub	07:53	Burton Constable, Pasture Lane	15:18
Old Ellerby, Crab Tree Lane, Blue Bell Pub	07:58	West Newton, opposite of West Newton Rd	15:27
New Ellerby, junction of Marton Rd & Lambwath Lane	08:00	New Ellerby, junction of Marton Rd & Lambwath Lane	15:30
West Newton, junction of West Newton Rd	08:03	Old Ellerby, Crab Tree Lane	15:32
Burton Constable, Pasture Lane	08:05	Skirlaugh, Main Street, Duke of York Pub	15:40
Holderness Academy & Sixth Form College	08:20	Rise, Rise Hall	15:43

Service 9S

Service provided by Ellie Rose Travel

Swine, Bus Stop	07:55	Holderness Academy & Sixth Form College	15:10
Coniston, Blacksmith Arms	08:00	Bilton, Main Road, New Agents	15:20
Coniston, Hull Road, Bus Stop	08:05	Ganstead, Main Road, Bus Stop	15:22
Ganstead, Main Road, Bus Stop	08:07	Coniston, Hull Road, Bus Stop	15:25
Bilton, Main Road, New Agents	08:10	Coniston, Blacksmith Arms	15:30
Holderness Academy & Sixth Form College	08:20	Swine, Bus Stop	15:35

Service 13S

Service provided by Ellie Rose Travel

Bilton, Main Street, New Agents, Bus Stop	08:07	Holderness Academy & Sixth Form College	15:10
Holderness Academy & Sixth Form College	08:20	Bilton, Main Street, New Agents, Bus Stop	15:18



Please note that the bus routes may change prior to September. A review is carried out in July in order to accommodate the students we will have on roll next year, please check our website during the summer for up to date timetables prior to starting school in September.



What Equipment

Will I need?

For the start of term

- Reading Book
- Pens
- Pencils
- Coloured Pencils
- Pencil Case
- Ruler
- Rubber
- Pencil Sharpener
- Calculator
- School Bag
- PE Kit
- Water Bottle
- A Positive Attitude





School Gateway

Holderness Academy & Sixth Form College is cashless.

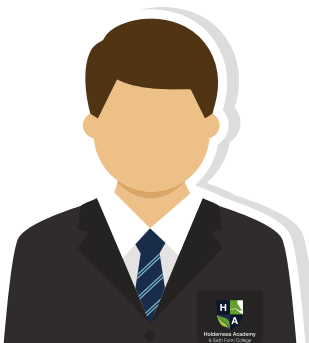
This means that we are unable to accept cash or cheque payments. Any money parents/carers need to pay to the academy (such as for dinner money and school trips) should be paid through an online School Gateway account.

Information how to set up an account are detailed on our website. Once an account is set up, parents/carers can download and use the School Gateway app on any smart phone.



“There are lots of different options in the lower school canteen, there is something for everyone! The cashless system means I also don’t have to worry about losing my dinner money.”

Jess



“It is great to be able to sit with all your friends in the canteen and have lunch. The meals are good and I like having the option to have either hot or cold food.”

Harry



Rewards

Central to the philosophy and culture of Holderness is the celebration of success.

We believe it is important for all teachers to praise students, which includes contacting parents, as a matter of routine. Such spontaneous day-to-day praise is the foundation on which relationships can be made.

Behaviours that are to be rewarded are representative of our vision and values such as being ambitious, adventurous, aspirational, kind, caring, independent, reflective, hardworking, enthusiastic, confident, resilient, honest, proud, respectful and tolerant.

Class Charts

Class Charts allows you to keep track of your achievements and behaviour, buy rewards from the Reward Store, keep track of scheduled detentions and view your timetable. This is all accessed through the Class Charts website or app which you can download to your mobile phone.

Holderness Learner Badges and Postcards

Students in Year 7, 8 & 9 are rewarded for exceptional behaviour and attitudes towards the academy values. Teachers will award students with **RESPECT, ASPIRATIONAL, RESILIENT** or **HARDWORKING** awards. Postcards will be sent home when thresholds are met for Explorer - Scholar - Leader - Collaborator. Students can achieve the following awards:

- Bronze
- Silver
- Gold

Students will also receive a badge to wear with pride on the lapel of their blazer.

Postcards

- **250** - Bronze
- **500** - Silver & letter/postcard home
- **750** - Gold & PL/PM letter home
- **1000** - Platinum & SLT phone call home
- **1250** - Diamond Headteacher's Award
- **1500** - Governor's Award
- **2000** - Chair of Governors' Award

Twice a year, a Progress Report will be sent home, this will include information regarding the total number of stamps for each learner.

Reward Assemblies

At the end of each term, staff from each subject area will meet to discuss and nominate students for Personal Progress and Academic Excellence. Certificates will be awarded for nominees, runners up and the winner. Certificates will be awarded and celebrated in full year assemblies in the final week of term.

Students with 100% attendance will be rewarded with the following certificates:

- Bronze- 1 term of 100% attendance
- Silver- 2 terms of 100% attendance
- Gold- 3 terms of 100% attendance

Reward Celebrations

At the end of each term students with 100% attendance and 0-5 behaviour points are invited to a reward celebration. This reward is led by the Pastoral Teams and may look different each term and across each year group. For example, near Christmas the reward may include a Christmas Party including food and music, whereas at Easter this may be an Easter celebration and an Easter egg.

In the Summer term students will be invited to attend an external visit, this could be to a theme park or the cinema.

relaxation
techniques
ready for the
examination
period


STEM Green
Power Racing Team



Have
f

Becom
and a Subj
Revise a
Year





Assemblies held by external agencies.

- School Nurse
- Internet Safety
- Agencies
- PCSOs
- YFS / PET / SMASH
- Local Sports Clubs

More information regarding clubs is available from staff and on the notice boards in the Year 7 area.

Extracurricular



Some of the clubs we offer are listed below.

- Art
- Athletics (Summer)
- Craft
- Football
- Homework
- Netball
- Newspaper
- Rounders (Summer)
- Rugby
- School Council
- School Productions
- Stem
- Student Charity Events
- WarHammer



Students' and Parents' Thoughts



My son settled into Holderness really quickly. It was lovely that he made new friends from different primary schools.

I have been so impressed with the support he has received from staff and other students. - Mrs H



"I received a lot of help to organise myself properly. My timetable and student planner were really useful.

My form tutor, Mrs Day, Mr Beecroft and all my teachers have been really kind." - Molly



I'm happy to have learned how to move around the site normally after COVID last year. - Jack



Student Well-being

Student well-being is one of the key priorities at Holderness and we strive to provide the best support to those students who need that extra help from time to time.

Student well-being is intertwined within our curriculum along with the academy's key values of our Holderness Learner; Aspirational, Resilient, Respectful and Kind.

What is ELSA (Emotional Literacy Support Assistant)?

There will always be young people in schools facing life challenges that detract from their ability to engage with learning, and some will require greater support to increase their emotional literacy than others. ELSA is an initiative developed and supported by educational psychologists. It recognises that students learn better and are happier in school if their emotional needs are also addressed.

Mrs Jones - our ELSA - Mrs Kemp and Mrs Smales have been trained by our educational psychologist to plan and deliver programmes of support to students who are experiencing temporary or longer term additional emotional needs. The majority of ELSA work is delivered on an individual basis, but sometimes small group work is more appropriate, especially in the areas of social and friendship skills. ELSA sessions take place in our Well-being Room which provides a calm, safe space for the students to feel supported.

In ELSA we aim to provide for a wide range of emotional needs:

- Recognising emotions
- Self-esteem
- Social skills
- Friendship skills
- Loss and bereavement
- Relationships
- Anger management

Partnerships

We work with Tigers Trust and MIND throughout the academic year within the academy, to provide students with a range of activities to help with their confidence, self-esteem and social skills.

Students that are selected can visit primary schools and deliver coaching sessions to children. We also offer reward visits to Let Loose! Adventure Park.



TIGERS TRUST
IN THE COMMUNITY



Pupil Premium

We offer support for every individual; Pupil Premium does not just mean a free meal.

The academy can provide financial support for students eligible, for example, with uniform.

If your child is eligible Free School Meals, further information is available on our website, under Information/Catering.

Service Pupil Premium helps us provide extra emotional and pastoral support during challenging times and to help mitigate the negative impact on service children of family mobility or parental deployment.

Learning Support

Some students need that little bit of extra support in school and we are here to provide that for you.

We are extremely excited to meet you when you come in September. We have spoken to your primary school class teachers who have told us all about you so we will make sure you are supported from the moment you take your first steps into Holderness, all the way until you leave us at the end of Year 11 or Year 13 if you come to our wonderful Sixth Form!

From the Learning Support Department

★ Meet the Team ★



Mrs Ashbridge

SENDCO / Designated Safeguarding Lead

"I am here to make sure all students who have some additional needs get the support they require whilst they are in school.

We are a very inclusive academy and make sure everyone can access and enjoy school life equally.

My job is also to make sure you are all kept safe whilst at Holderness."



Mr Pearson

Enhanced Provision Manager

"I am here to provide support for students on the Autistic Spectrum, making sure you feel supported and comfortable both in and out of the classroom during your time in Holderness."



Mrs Jones

Well-being Champion

"I am here to help you with your well-being during your time in school. This means helping you manage your emotions, form friendships and deal with any situations that you just do not understand.

We have a wonderful team of Teaching Assistants who are here to support you both in and out of lessons."



Important Places

Our site is very large, but this is not something to worry about, a lot of the classrooms are close together for each subject and we will help you find your way around and take you to your lessons, if you need us to.



Year 7 Area

In here you will find Mrs Day, the Year 7 Pastoral Manager who will help you with daily academy life.



Mrs Day
Pastoral Manager

"Hi, my name is Mrs Day, and I am really excited about meeting you all when you start your secondary school life with us at Holderness. I have worked at the academy for just over 7 years and loved every moment. I really love my job and truly believe that we provide excellent pastoral support for all our students.

Please try not to worry about starting secondary school, we have a very experienced team ready and willing to support you! We have been sending out lots of information to support your transition to secondary school, but if you have any questions please don't hesitate to ask."



Enhanced Resource Provision

At Holderness we have an Enhanced Resource Provision for students on the Autistic Spectrum. This provision is designed to help students who just need a little extra support navigating life in a mainstream secondary school. We have individual spaces to work, relaxed areas for socialising and a sensory room to relax in or to be used as a place to calm down when things get a little bit much.

Students on the Autistic Spectrum are extremely important to us here at Holderness and we will do our best to make sure they all feel as comfortable as possible whilst they are with us.

Our Sensory Room

Our sensory room provides a space that is worlds away from the academy environment feeling. Filled with comfy flooring, beanbags and sensory equipment, students can use this area to relax, or to escape from situations they find difficult until they feel ready to face the day again. The room is monitored by CCTV meaning students can remain safe if they need time alone without being disturbed by staff entering the room.

Classrooms

Each subject has a unique style of classroom, but the teaching and classroom rules remain the same in every one of them.

Canteen

Our canteen serves lots of yummy food. It can be a little busy, but we will never leave you in there on your own, if you don't want us to. If you don't like crowded areas, you can eat your food in the comfort of the Learning Support area.

Year 7 Playground

If you love life in the outdoors, then you can spend your breaks and lunchtimes on the Year 7 Playground. This playground is solely for the use of Year 7 students so you will have a lovely space to meet new friends and socialise together.

Sports facilities

We have lots of sports facilities at the academy including a 3G pitch, 6 grass football and rugby pitches, an athletics track and 5 tennis courts.



What's Next?

As part of the academy, our Sixth Form College provision is exceptional, both in breadth and opportunity.

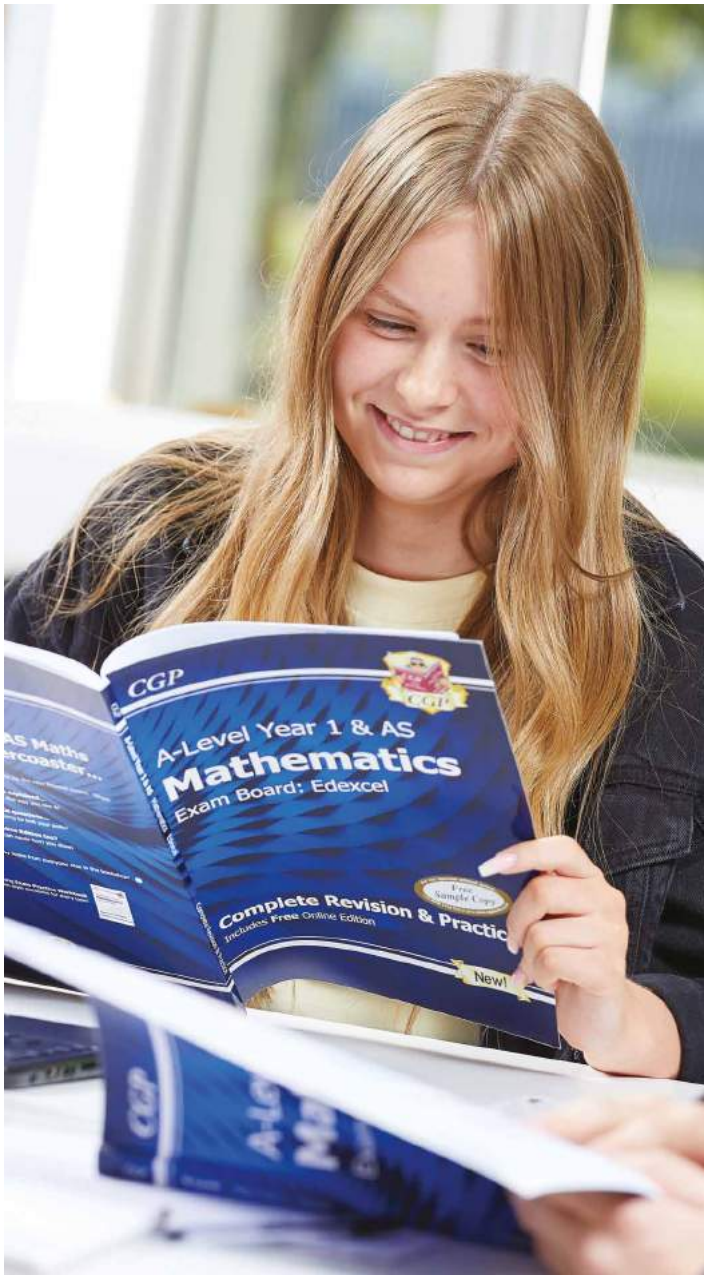
It focuses on providing high quality teaching and care to secure the best achievement and outcomes for all.

Within the Sixth Form College there is a dedicated suite of teaching rooms and facilities, which provide a bespoke Sixth Form College feel.

Sixth Form College students play a full role in the life of the academy, but equally enjoy the advantages of this dedicated provision. We are therefore delighted that, each year, a large number of our Year 11 students choose to continue their studies at our Sixth Form.

The Sixth Form College is an integral part of the academy and offers you an opportunity to extend your learning more deeply and in new and exciting subjects.





Our Sixth Form College offers you a unique learning environment where you can study your favourite, or new, subjects in familiar surroundings by the staff you know and trust.

With a wide variety of subjects to choose from, ranging from A-levels to Level 3 BTEC Diplomas, students can pick the subjects they want to study, and meet their aspirations.

Our experienced staff and large departments mean we can offer a wide range of choices to meet a huge range of progression opportunities. Students can pick a combination of subjects that best suits them.

Our courses are taught by qualified subject specialist teachers. They have a wide range of backgrounds and expert knowledge in their field with many of them being current or former examiners so have first-hand knowledge of how to achieve great exam results.



To build on Year 7's aspirations, a visit will be arranged for you to visit the Sixth Form during the academic year.



Keep up to date with academy life...



*Keep up to date with
academy life and activities
by regularly visiting our
website and Twitter.*

 **@HoldernessAcad**

www.holderness.academy



“

*To inspire and empower
young people to make a
positive difference today;
ready for tomorrow.*

”



Aspirational
Resilient
Respectful
Kind



Holderness Academy
& Sixth Form College



THE CONSORTIUM
ACADEMY TRUST

Holderness Academy &
Sixth Form College
Station Road, Preston
Hull
HU12 8UZ

Tel: (01482) 899315
office@holderness.academy

 @HoldernessAcad