



**Holderness Academy**  
& Sixth Form College

**SIXTH FORM  
PROSPECTUS  
2020-21**

# WELCOME

We look forward to welcoming you to our Sixth Form. Studying with us provides you with the opportunity of achieving the best possible grades and following in the footsteps of our previous students who have achieved places at top universities to study for degrees in a wide range of subjects including Medicine, Physiotherapy, Nursing, Midwifery, Chemical Engineering, Computing, Engineering, Social Work and other competitive fields.



After almost twenty years of working with Sixth Form students across different colleges, I never get tired of my role. It is a real privilege to be a part of the journey each of our students take, no matter where that may lead. I'm always fully aware that our students go on to achieve amazing outcomes and illustrious careers. Playing the smallest part in that is a real honour.

*Neil Pinder, Assistant Headteacher, Director of Key Stage 5*



Since joining the college as an A Level Law teacher in 2010, I have been lucky enough to meet and work with an amazing range of gifted students and incredibly hard working staff. I am passionate about our Sixth Form College, and feel an immense amount of pride for our rich and successful history. I feel privileged to be part of an excellent team to continue to drive it forward into the future. The level of support our institution offers is second to none, and the number of students who have gone on to pursue their ambitions in a vast array of careers indicates our commitment to all of our students.

*Faye Sims, Head of Sixth Form*



I have been a member of the Sixth Form team since 2011, during which time I have developed experience of working with a range of students to support their academic studies, applications to Higher Education, and provide pastoral guidance. Previous employment at the University of Hull has assisted in the advice I can offer to students whose ambitions are to progress to Higher Education. I am proud to be a member of such a dedicated team of Sixth Form staff; we all work closely together to ensure we can offer tailored support and guidance to students at our institution.

*Alice Owst, Key Stage 5 Pastoral and Academic Support Manager*



# WHY HOLDERNESS?

## » SUPPORT

We will support you every step of the way. From the transition from GCSE to the first year of Sixth Form, or the backing of your applications to university or employment, we are dedicated to getting you where you want to be. You will have your own tutor to provide one-to-one support and guidance and a team of professional and knowledgeable advisors to help you plan your next careers steps. Your personal wellbeing and academic performance will be supported throughout your time with us. We have an assigned member of the Sixth Form team who is experienced in emotional and well-being support.

## » RESULTS

Our super value-added results and A-Level grades mean that the vast majority of our students progress to the university of their choice. We regularly achieve 100% pass rate in our A-Level and BTEC subjects.

## » ENRICHMENT

From trips and visits, theatre clubs, debating teams, university lectures, music, performance and charity work, there are so many options available to you. Students can also follow additional courses that complement their academic programme. We are privileged to have an extremely generous group of students who regularly donate their time and money for those less fortunate than themselves. Along with Comic Relief and Sport Relief, our students regularly fund-raise for Macmillan Cancer Support, William Booth House (Salvation Army) and other local charities such as Hull Women's Aid.

## » GUIDANCE

If you are one of our high achieving students, or just in need of some subject guidance we have a number of subject tutors that can offer one-to-one guidance. Many of our A\* students use this service to stretch and challenge their understanding. Students also use one-to-one support to discuss assignments, revision and how to plan and schedule their work. Each student is unique and our team of tutors makes sure that you get the help you need.

## » TRANSPORT

As well as having buses available across our catchment area, we also have two buses that run through Hull. There is extensive car parking available across the site.

## » OPPORTUNITIES

Students are faced with some life-changing decisions when choosing their options. We can support your initial careers guidance through school and provide specialist information on your post-16 opportunities. Our staff are highly trained and very knowledgeable.

## » ENTRY CRITERIA

A minimum of 5 GCSEs at a Pass Grade 5 or above are required. Some courses have specific subject grade requirements for entry - please speak directly to our subject leaders in the relevant faculty to discuss the requirements of individual courses.



# EMPLOYMENT OPPORTUNITIES

**We regularly employ students in the Sixth Form to act as:**

## **Academic Mentors – to Year 11 students**

GCSE years are challenging for any student. As an academic mentor your role is to support current Year 11 students on their journey to success. You will share your experiences – good or bad, offering social and academic advice to Year 11 students. This is a position which requires a high degree of maturity and empathy and is ideally suited to students who want to support others to make a positive impact.

## **Exam Invigilators (Internal Mock exams only)**

Our Sixth Form students provide a supportive and friendly face during a time of high pressure. Year 10 and 11 mock exams are the first time many Key Stage 4 students gain a true experience of what their GCSE exams will entail. As part of this role, you will supervise the students during the exams and support the Exams Officer in coordinating large numbers of students and their PPE papers.

Other roles include Lunchtime Supervisors, Car Park Attendants (Parents' and Open Evenings) and Display Assistants. All students can apply to any of these positions and the rates of pay are very competitive.



# SIXTH FORM TOURS

Every year Holderness Academy Sixth Form organise a wide range of exciting curriculum-based trips and visits. Destinations include Berlin, Paris, Rome, Auschwitz, the Somme Battlefields, Iceland, and closer to home London, various locations on our beautiful East Yorkshire coast and several outings in our very own City of Culture.





# STUDENT PROFILES



## Year 12 student Tom explains his decision to attend Holderness Academy Sixth Form:

### Why did I select Holderness Academy Sixth Form?

I selected Holderness Academy Sixth Form because I had a prior understanding about the help and the involvement which the staff and teachers around the school provide their students. I knew that staying on at Holderness Academy Sixth Form would not be an unwise decision, as I could continue to study in a familiar environment with teachers whom I can trust.

### What am I enjoying so far?

With a greater level of independence around the Academy, being able to study independently helps to develop the most rudimentary life skills needed after Sixth Form, either for employment or higher education. The facilities provided are exemplary in providing a supportive learning environment for everyone, creating a close-knit community of likeminded individuals who want to learn, as opposed to purely being taught.

### Do I feel as though I have good relationships with the teachers?

The positive work ethic and relationship between the students and teachers have always been strong since the beginning, allowing for a significantly more relaxed working environment - without the pressure of having to succeed all of the time, but instead to make mistakes and learn from them.

### How am I finding A-Level study?

A Level study is far more engaging than GCSE, with a large amount of content learnt allowing me to be able to recall the fundamentals from GCSE, taking knowledge a step further to build on a career path. Being granted independence to adjust to the larger world of work through studying gives a sense of responsibility and desire to achieve and to leave after two years with the knowledge and skills to succeed. For myself, A Level study is challenging but very enjoyable, it is vital to meet deadlines; it is a required skill for the vast majority of careers. Being able to study alongside other individuals helps to strengthen friendships with old friends and new, helping each other out without any prejudice based on one's abilities or background.

- Tom S

## SIXTH FORM LEAVERS

### Papinder N - Law, University of York

During my time at Holderness Academy Sixth Form College, I studied Law, Business Studies and Geography. The Sixth Form team at Holderness Academy helped me achieve the grades that I needed to be able to study Law at the University of York.

### Matthew D - Dental Surgery MChD/BChD; Oral Science BSc, University of Leeds

Thanks to the Holderness Academy Sixth Form team for their support and guidance, I am now at the University of Leeds studying Dental Surgery/Oral Science. I hope that I will progress my knowledge further and achieve a career in Dentistry.

### Ellie W - Physics, University of Hull

At Holderness Academy Sixth Form I studied Biology, Physics, Maths and History. I thoroughly enjoyed my time at the Sixth Form, the staff were so supportive. After College I wanted to expand on my knowledge of Physics by studying the subject further at the University of Hull.

### Kieran H - Policing and Investigations, University of Huddersfield

I am currently at the University of Huddersfield where I am studying Policing and Investigations, after which I hope to join the Police Force. With a combination of hard work and excellent support from Holderness Academy's Sixth Form team, I am half way to achieving my goal.





# STAFF PROFILES

Our courses are taught by qualified, subject specialist teachers. They have a wide-range of backgrounds and expert knowledge in their field with many of them being examiners (or having previously been examiners) so have first-hand knowledge of how to achieve great exam results.



## D Fisher - Criminology

I have been teaching Criminology in the Sixth Form for five years. Before teaching, I qualified as a Solicitor of the Senior Courts of England and Wales. Criminology is a brand new course only available at Key Stage 5. It involves the study of crime and why people commit crime. One of the students' favourite theorists that we study is Lombroso- he theorised that you can tell if someone is criminal by the way they look! The course is 50% coursework and 50% exam. This means that you have the opportunity to build up your grade throughout year one and two. Criminology provides you with a grade/UCAS points towards your chosen course at University and can lead to a number of careers in the Criminal Justice System such as Forensic Scientist; Police Officer; Solicitor or Barrister.



## S Allen - Psychology

I have been teaching Psychology full time in the Sixth Form for 8 years, with a background in working in both Clinical and Forensic Psychology. Psychology is a new course only available at Key Stage 5. It involves the scientific study of human behaviour. Within the course, you will look at explanations for why we behave the way we do as human beings and what causes this according to various approaches such as the biological and behavioural explanations. Students who wish to pursue careers working with people find this a useful course choice. Students who have previously studied this course have careers in Nursing, Midwifery, Teaching, Social Work and the Police Force. Students can also study Psychology at University and develop careers in specific areas of Psychology such as Forensic, Counselling, Educational and Clinical Psychology.

# COURSES

## You can study the subjects that work for you

With a wide variety of subjects to choose from, ranging from A-levels to Level 3 BTEC Diplomas, you can pick the subjects you want to study and meet your aspirations.

Due to our experienced staff and large departments we can offer you a wide range of choices to meet a huge range of progression opportunities. You can pick any combination of subjects that best suits you (subject to availability).

Subjects available range from Art to Science as well as covering new courses such as Criminology and Psychology. Students select between 3 to 4 subjects.

# COURSE PAGES

Business Studies	11	English Literature	27
BTEC Business	12	English Language & Literature	28
BTEC Information Technology	13	Financial Services & EPQ	29
Computer Science	14	Film Studies	30
French	15	Creative Media Production	32
German	16	History	33
Spanish	17	Geography	34
BTEC Travel & Tourism	18	Religious Studies	35
Law	19	Health & Social Care	36
Criminology	20	Maths	37
Psychology	21	Further Maths	38
Design & Technology	22	Biology	39
Textiles Design	23	Chemistry	40
Fine Art	24	Physics	41
Music	25	Applied Science	42
Drama & Theatre Studies	26	Physical Education	43

# BUSINESS STUDIES

## A-Level

Business Studies is a subject which looks at the issues real businesses face. In lessons, students examine these issues in a fun and interactive way, learning how to apply business theories and ideas to different contexts.

Business Studies prepares students to enter the world of work by providing a detailed insight into the workings, problems, dilemmas and opportunities of the business world.

It encourages students to adopt a balanced and questioning approach to studying, where the skills of being able to appreciate two sides of an argument are heavily promoted.

## Specific Requirements

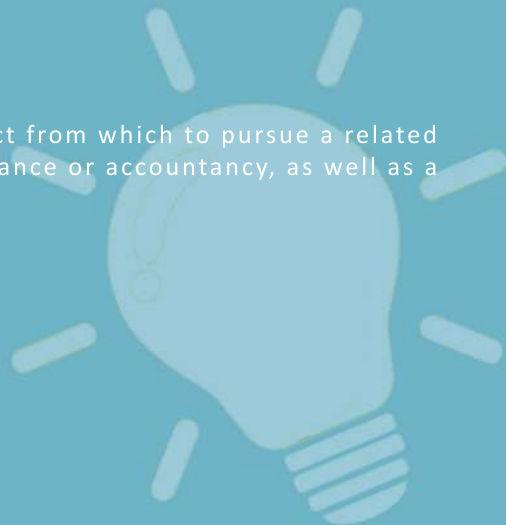
A Level 5 in GCSE subjects is required for most A-level programmes. Please speak to the Sixth Form subject teacher for specific details on course entry.

## Assessment

100% written examination.

## Where does it lead?

Business Studies is an ideal subject from which to pursue a related degree course in management, finance or accountancy, as well as a wide range of related professions.



# BTEC BUSINESS

## BTEC Level 3

BTEC Business is a vocational course which allows students to study a variety of aspects of the Business world in a vocational context, meaning knowledge is applied to real-world scenarios via extensive research. The National Extended Certificate is equivalent to one A-level.

## Specific Requirements

You need 5 GCSEs at Level 5 and above including at least a Level 5 in Maths to study these courses.

## Assessment

58% Exam

Unit 2 – Business and Personal Finance

Unit 3 – Developing a Marketing Campaign

42% Coursework

Unit 1: Exploring Business

Unit 8: Recruitment and Selection Process

## Where does it lead?

The obvious career choice for students studying Business is to one day run their own business. There are many more career paths one can study having gained a BTEC Business qualification, such as Law (Lawyer), Politics, Banking, Business Management or Consultancy, and Teaching. You will be highly equipped in entrepreneurial skills and well-placed to develop your own organisation should this be your choice.





# BTEC INFORMATION TECHNOLOGY

## **BTEC Level 3 Extended Certificate**

The use of IT is all around us. Social media is now being used for a huge range of business needs and being able to understand databases is fundamental to how business and organisations operate. This combined with the knowledge of how networks operate will provide students with a fantastic basis for further study or gaining employment. This qualification gives you an exciting opportunity to study how businesses use social media and to create your own social media campaign. You will also develop a website to help support a small business reach out to its customers.

## **Specific Requirements**

A Level 5 in GCSE subjects is required for most A-Level programmes. It is not specifically required that you have taken IT at Key Stage 4 but it will be of benefit.

## **Assessment**

Unit 1 & 2 exams are taken in the summer of Year 12.  
Unit 3 & 6 coursework units are completed during Year 13.

## **Where does it lead?**

There are many varied paths that can be taken after taking this course such as social media manager, web designer, systems production and help desk operator. The subject gives you a good grounding in a range of the skills and knowledge that can either be taken further or used to support study in other areas.



# COMPUTER SCIENCE

## **A-Level**

It is an exciting time to be a computer scientist! We are living in the midst of a revolution powered by computers. This revolution has invaded all aspects of society. It is a communication revolution, a transportation revolution, a medical revolution, an entertainment revolution. Central to things we take for granted every day such as Social Networking, essential elements of Transport and Vehicles, Medical Health records, Commerce etc. are computers: hardware, software and innovative applications. Indeed, computer science is an extraordinarily creative enterprise. It has changed the way we live, has propelled our economy forward through innovation and will continue to do so for the foreseeable future.

Computer Science at A-level will continue your journey into this world and help you understand how it works.

## **Specific Requirements**

A Level 5 in GCSE subjects is required for most A-Level programmes. It is also a requirement that you have studied Computer Science at GCSE.

## **Assessment**

Paper 1 – 2 hours 30 minutes on-screen examination - 40%  
Paper 2 – 2 hours 30 minutes written examination - 40%  
NEA – an extended piece of coursework worth 20%

## **Where does it lead?**

Computer Science encompasses many specialised fields, including information retrieval, software engineering, bioinformatics, computational geometry, networking and distributed systems to list a few.



# FRENCH

## A-Level

Studying French will make you a sought-after candidate in the job market. Employers will recognise in you someone who has good communication skills, who is curious and open to different ideas and cultures. You will immerse yourself in various forms of literature and media to better understand the subject. A French A-level could also act as a foundation for further study, on its own or combined with other subjects as varied as Russian, Linguistics, Business Studies or even Medicine.

## Specific Requirements

A minimum of Level 5 at GCSE will be expected for students who wish to study French at A-level.

## A Level Assessment

Paper One: Listening, reading and writing  
2hrs 30 - 40% of the A-level grade. Grammar is an integral part of this paper.

Paper Two: Writing: the literary works: books or film from the French speaking world  
2 hours 30 - 30% of the A level grade.

Paper Three: Speaking: individual research project  
21-23 minutes (incl. 5 mins preparation time) - 30% of grade.

## Where does it lead?

Many of our students continue to study French at university, combining French with other languages. French provides an opportunity to live and work abroad.

# GERMAN

## A-Level

German is a fun language to study. It is a varied and challenging course that provides students with a strong foundation for living or working in Germany or progressing to HE study. You will have the opportunity to engage in different styles of learning, have fun, enjoy some interesting lessons, watch real German films and develop skills that you might not think you had. A German student needs to be open-minded and interested in experiencing another culture. A general interest in news and topical issues is important, as well as the willingness to speak and discuss topics in German.

## Specific Requirements

A minimum of Level 5 at GCSE will be expected for students who wish to study German at A-level.

## A Level Assessment

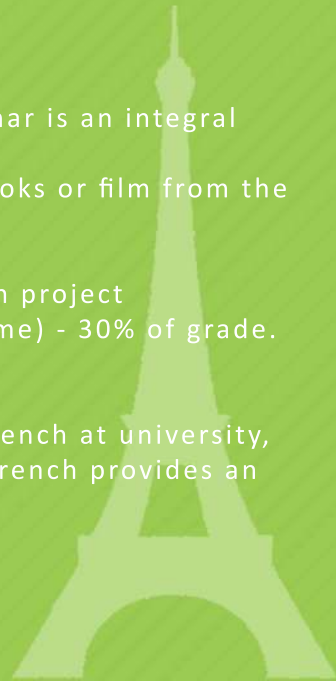
Paper One: Listening, reading and writing  
2hrs 30 - 40% of the A-level grade. Grammar is an integral part of this paper.

Paper Two: Writing: the literary works: books or film from the German speaking world  
2 hours 30 - 30% of the A-level grade.

Paper Three: Speaking: individual research project  
21-23 minutes (incl. 5 mins preparation time) - 30% of grade.

## Where does it lead?

Language skills are much sought-after in the commercial world. Many students go on to study languages at University, often in combination with another subject e.g. Business, Law and International Tourism.



# SPANISH

## A-Level

Spanish is now the second most widely spoken language in the world, and is therefore one of the most valuable qualifications a student can obtain. You will learn about aspects of society, culture and language not just in Spain, but in many other Spanish speaking countries as well. Studies can include a film, poetry, a play, architecture and artists, and will deal with aspects of Hispanic society past and present. This will be done using authentic spoken & written resources. An awareness of news and topical issues, together with a willingness to communicate in the language is essential.

## Specific Requirements

A minimum of Level 5 at GCSE will be expected for students who wish to study Spanish at A-level.

## A Level Assessment

Paper One: Listening, reading and writing

2hrs 30 - 40% of the A level grade. Grammar is an integral part of this paper.

Paper Two: Writing: the literary works: books or film from the Spanish speaking world

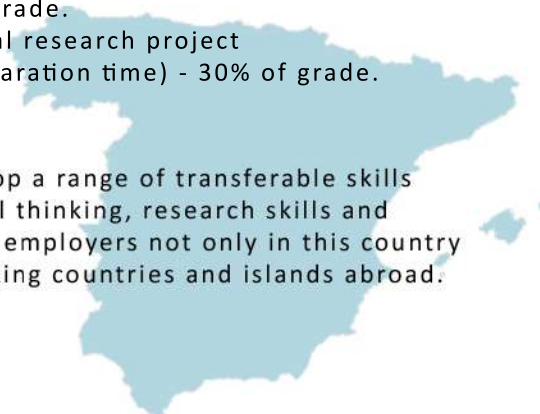
2 hours 30 - 30% of the A level grade.

Paper Three: Speaking: individual research project

21-23 minutes (incl. 5 mins preparation time) - 30% of grade.

## Where does it lead?

This qualification helps to develop a range of transferable skills including communication, critical thinking, research skills and creativity, which are valuable to employers not only in this country but in many other Spanish speaking countries and islands abroad.



# BTEC TRAVEL & TOURISM

## BTEC Level 3

The Travel and Tourism industry continues to grow rapidly. It is a dynamic and exciting industry that has generated many different employment opportunities such as airlines and tour operators. You will follow a vocational and relevant curriculum that links content knowledge to practical approaches. You will develop knowledge and skills crucial to the industry.

## Specific Requirements

Students following this course will need to be very interested in the travel and tourism industry with a view to further enhancing their qualifications at higher education and / or pursuing a career in the industry.

## Assessment

This course is assessed through written exams, coursework assignments and controlled assessments. You will have one exam and one piece of coursework in Year 12, with a further piece of coursework and a controlled assessment in Year 13. Each year is worth 50% of the total qualification.

## Where does it lead?

Previous successful students have progressed on to study travel, tourism management, events management and Business related courses at a variety of universities. Some students are now working for airports, airlines, travel agencies.





# LAW

## A-Level

Law is an exciting subject, taught in a dynamic way involving the full range of learning activities. A robust legal system is the foundation of a fair society. If you feel strongly about concepts like justice and equality then this course could be very rewarding for you. You might see yourself as a barrister, a solicitor, legal executive or legal secretary. Alternatively you might want to choose law because it is a fascinating course which will help you develop transferable skills such as analysis and problem-solving. Whatever your vision, an A-level in Law is a valuable first step in achieving your ambition.

## Specific Requirements

A Level 5 in GCSE subjects is required for most A level programmes. Please speak to the Sixth Form subject teacher for specific details on course entry. A keen interest and willingness to master a body of information is essential.

## Assessment

Three written examinations:  
Paper 1 - Criminal Law  
Paper 2 - Civil Law  
Paper 3 - Human Rights

## Where does it lead?

Students may go on to study Law at University and then become Barristers, Court Clerks, and Legal Executives. Many students combine Law with business courses at degree level.

# CRIMINOLOGY

## Level 3 Certificate/Diploma

Criminology is a subdivision of the larger field of Sociology. It draws from knowledge of Psychology, Law, Anthropology, Psychiatry, Biology, Statistics and other disciplines to explain the causes and prevention of criminal behaviour.

## Specific Requirements

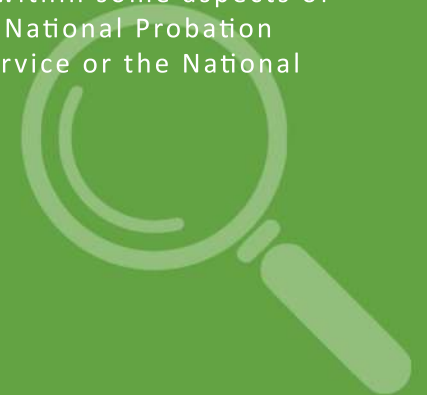
A Level 5 in GCSE subjects is required.

## Assessment

Each year consists of two units. One unit is assessed by an internal assessment, and the other is assessed by an external exam.

## Where does it lead?

The Level 3 Diploma in Criminology supports access to higher education degree courses, such as BSc Criminology, BSc Criminology and Psychology, LLB Law with Criminology and BSc Psychology and Sociology. Alternatively, the qualification allows learners to gain the required understanding and skills to be able to consider employment within some aspects of the criminal justice system, e.g. the National Probation Service, the Courts and Tribunals Service or the National Offender Management Service.



# PSYCHOLOGY

## A-Level

Psychology is a social science and it involves the study of the mind and behaviour. It also involves the examination of various theories and consideration of research evidence. Students studying this subject will be expected to learn lots of case studies throughout the course. Psychology deals with what people do and why they do it. It also examines questions concerning everyday commonplace behaviour, as well as those behaviours that can be considered to influence the quality of life for the individual and those that she or he shares their life with. Thus, Psychology seeks to explain and understand the observable behaviour and the internal processes that make human beings what they are.

## Specific Requirements

Students wishing to study Psychology are required to have a GCSE grade 6 in Maths, English and Science due to the scientific nature of the subject.

## Assessment

Three written exams:

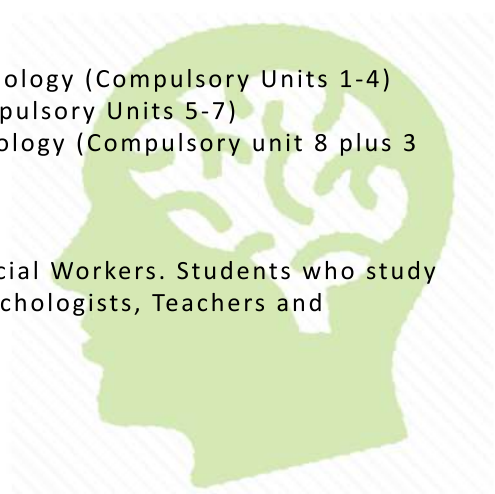
Paper 1: Introductory topics in Psychology (Compulsory Units 1-4)

Paper 2: Psychology in Context (Compulsory Units 5-7)

Paper 3: Issues and Options in Psychology (Compulsory unit 8 plus 3 optional units)

## Where does it lead?

Many students become Nurses or Social Workers. Students who study Psychology at University become Psychologists, Teachers and Researchers.



# DESIGN AND TECHNOLOGY

## A-Level

Design and Technology utilises a wide range of design disciplines but is firmly rooted in the skills required to design and make high quality products - products that are fit for purpose, satisfy wants and needs and most importantly give you the opportunity to demonstrate your design and technology capability. This course is broken into design theory and industrial practices but also allows for workshop activity in the production of students' projects, specialising in materials that reflect student choice.

## Specific Requirements

A level 5 in GCSE subjects is required for most A-level programmes. Please speak to the Sixth Form subject teacher for specific details on course entry.

## Assessment

Component 1: Principles of Design and Technology -  
Written exam - 50%

Component 2: Independent Design and Make Project -  
Controlled assessment - 50%

## Where does it lead?

Students who follow this programme often move into higher education and follow degree programmes such as Engineering and Architecture. Other popular course options include Industrial Design, Product Design, Graphic Design and Interior Design.





# TEXTILES DESIGN

## A-Level

Textile Design is a specialist subject offering a range of techniques spanning both historical and contemporary approaches to both textiles and fashion. A diverse approach provides students with opportunities to engage with methods which explore the complete development of textile products, including fashion items, from initial illustration projects through to sophisticated fully fabricated items, with a clear understanding and utilisation of industrial standards. Studies are highly personalised and we encourage individuals to express their ideas through guided independent study. Students have numerous opportunities to access extra guidance from specialist tutors outside of session time, and a clear support plan is always in place to aid student achievement.

## Specific Requirements

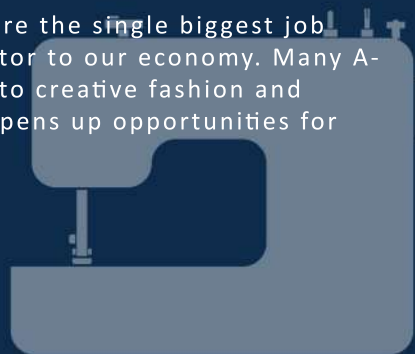
A level 5 in GCSE subjects is required for most A-level programmes. Please speak to the Sixth Form subject teacher for specific details on course entry.

## Assessment

60% Coursework  
40% Externally Set Task

## Where does it lead?

The creative industries including media are the single biggest job sector in the world and a major contributor to our economy. Many A-level Textile Design students progress onto creative fashion and textile design degrees, this course also opens up opportunities for employment within those industries.



# FINE ART

## A-Level

Fine Art is a specialist subject offering a range of techniques spanning both traditional and contemporary art. As our courses offer a diverse approach to art and design, students have opportunities to engage with methods and techniques which are taught in each of the areas of study we offer. Studies are highly personalised and we encourage individuals to express their ideas through guided independent study. Students have numerous opportunities to access extra guidance from tutors outside of session time, and a clear support plan is put in place to aid student achievement. The department is an exciting and vibrant environment in which to study.

## Specific Requirements

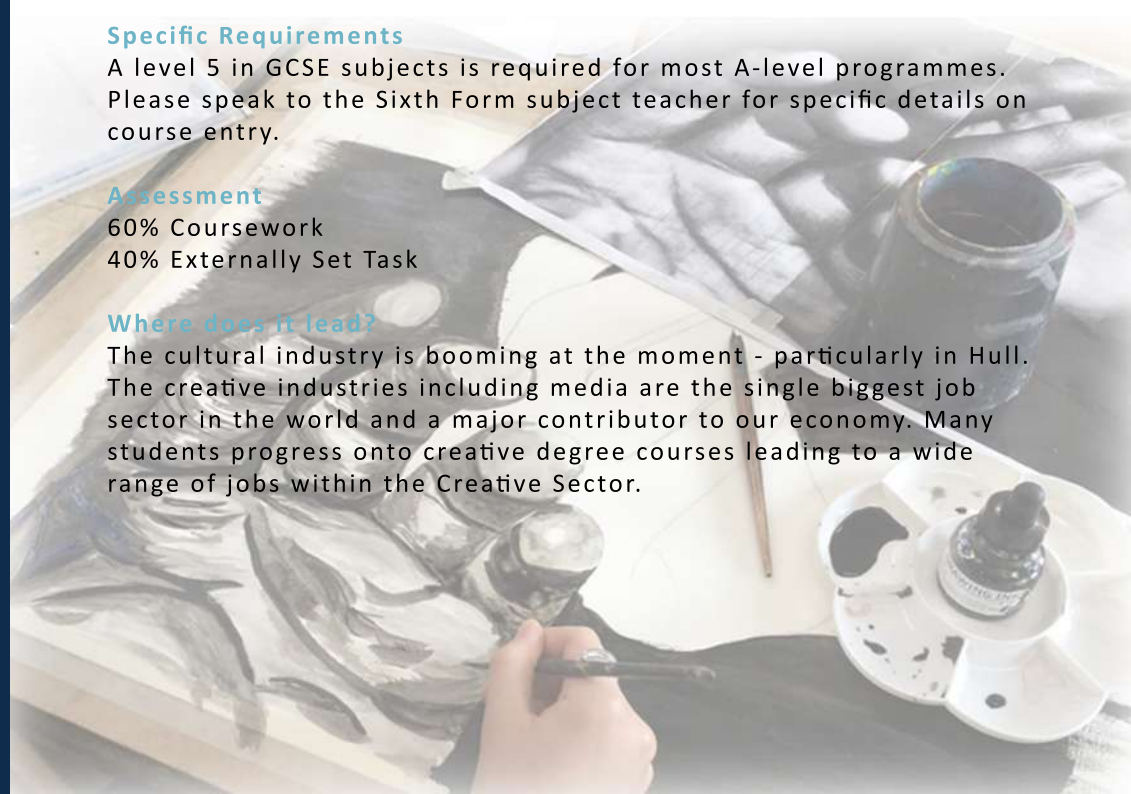
A level 5 in GCSE subjects is required for most A-level programmes. Please speak to the Sixth Form subject teacher for specific details on course entry.

## Assessment

60% Coursework  
40% Externally Set Task

## Where does it lead?

The cultural industry is booming at the moment - particularly in Hull. The creative industries including media are the single biggest job sector in the world and a major contributor to our economy. Many students progress onto creative degree courses leading to a wide range of jobs within the Creative Sector.



# MUSIC

## A-Level

If you have a keen interest in creating and listening to different styles of music and you wish to broaden your experience and deepen your understanding of both live and recorded music from Renaissance to 20th Century and from Film Music to Jazz, then this is the course for you. You will study all aspects of music including composition and performance, with several opportunities to display your skills in informal recitals during the course. We have a PC suite equipped with composing software. As well as performing during the course, you will also have the opportunity to join one or more of our excellent ensembles within the department.

## Specific Requirements

A level 5 in GCSE subjects is required for most A-level programmes. Please speak to the Sixth Form subject teacher for specific details on course entry. It is useful to have taken GCSE Music, but is not essential as long as you can already play an instrument and are able to read music.

## Assessment

A-Level is examined through performing, composing, and a written exam.

## Where does it lead?

A very wide range of opportunities is on offer for those with qualifications in A-Level Music including many in the Media and Music Industries.



# DRAMA AND THEATRE STUDIES

## A-Level

Drama & Theatre Studies is an exciting course which offers a variety of different topics to suit anyone with an interest and passion for theatre and performance. It covers a number of different practical skills in acting, directing, designing theatre and devising. There is a theory element to the course which develops your skills in analysing plays and live performance. It is an excellent foundation for anyone who wishes to pursue a career in theatre or drama. Expect to participate in practical performance projects as part of your course as well as take an active role in college productions.

## Specific Requirements

A Level 5 in GCSE subjects is required for most A-level programmes. Please speak to the sixth form subject teacher for specific details on course entry. Whilst A level Drama & Theatre studies does not require you to have studied the subject at GCSE, you should be experienced in performing either at drama school or through private lessons to ensure a suitable level of experience at the start of the course.

## Assessment

The course is assessed in three ways:

- A practical performance (20 minutes), which examines your acting skills
- Written coursework (2000 words) which examines the development of your role in the practical performance
- Written exam

## Where does it lead?

This qualification is widely accepted by universities for entry onto a wide range of courses. Students have progressed on to study degree courses in Drama, Technical Theatre and Teaching.





# ENGLISH LITERATURE

## A-Level

English Literature's historicist approach to the study of literature rests upon reading texts within a shared context. Working from the belief that no text exists in isolation but is the product of the time in which it was produced, English Literature encourages students to explore the relationships that exist between texts and the contexts within which they are written, received and understood. Studying texts within a shared context enables students to investigate and connect them, drawing out patterns of similarity and difference using a variety of reading strategies and perspectives. English Literature encourages students to debate and challenge the interpretations of other readers as they develop their own informed personal responses.

## Specific Requirements

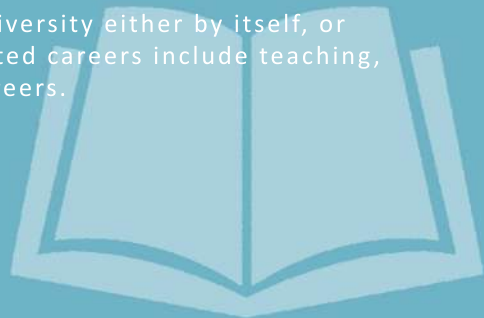
We prefer students to hold a Level 5 or above in both GCSE English Language and English Literature.

## Assessment

Paper 1: Love through the ages (40%) 3 hours  
Paper 2: Texts in shared context (40%) 2 hours 30 minutes  
NEA (non-examined assessment) (20%)

## Where does it lead?

English Literature can be studied at university either by itself, or alongside other subjects. Possible related careers include teaching, journalism and other media related careers.



# ENGLISH LANGUAGE & LITERATURE

## A-Level

Studying English Language and Literature will improve your analytical, creative and communication skills. It combines well with almost every subject and is highly valued by Higher Education institutions and employers. The Language and Literature Course seeks to build on students' existing knowledge developed at GCSE. During this course, students will examine media materials as well as a range of classic and modern literacy texts. Students will be expected to evaluate styles, purposes and effects of language. You will study a range of fiction, poetry and drama from various periods.

## Specific Requirements

A Level 5 or above in both GCSE English Language and English Literature.

## Assessment

Voices in Speech and Writing: 2 hours 30 minutes (40%)  
Varieties in Language and Literature: 2 hours 30 minutes (40%)  
NEA (20%)

## Where does it lead?

Having A-Level English Language and Literature as a subject can offer you a host of employment opportunities, as well as giving you a distinct advantage when applying to universities. Almost any career can be accessed with A-Level English, however career opportunities that require an English A-Level include journalist, columnist, screenwriter, editors and teaching, with several other careers, particularly in the media and publishing industries, where having an A-Level in English is a huge advantage.

# FINANCIAL SERVICES

## Studied as an Enrichment Course

The Certificate in Financial Studies (CeFS) provides a comprehensive introduction to personal finance. Its purpose is to prepare students for further study through the development of the core skills of critical analysis and evaluation, synthesis, verbal communication (through classroom discussion) and written communication. CeFS develops the knowledge and skills required for young people to make informed financial decisions by introducing them to the risks and challenges involved in personal finance and the tools for effective planning. Within this, it provides a solid basis for creating financial inclusion, by exploring social-economic trends and their relationship with an individual's circumstances and attitudes.

# EPQ

## Studied as an Enrichment Course

The Extended Project Qualification (EPQ) has proved to be popular with students and teachers alike. It provides an opportunity for students to extend their skills in independent research and project management beyond the A-level syllabus, stand out and prepare for university or their future career. It can also be used to earn extra UCAS points as it is worth half an A-Level.

The qualification allows students to carry out research on a topic that they have chosen and is not covered by their other qualifications. They then use this research to produce a written report and, in the case of practical projects, an artefact or a production. A student can take inspiration from something studied in class or something completely unrelated to their studies.

# FILM STUDIES

## Studied as an Enrichment Course

Many modern films open with a scene without dialogue and yet, without an explanation of who is doing what and why, we understand a lot of what is going on. Having watched many different films we have unconsciously developed an understanding of film language. A-Level Film Studies is really about studying and understanding that process. It works at all levels: in a scene, the director's choice of lighting and camera angles, for example, determines our perception of characters. In the film as a whole, we make guesses about characters' motivations and actions based on our knowledge of other films in the same genre. At the level of the film industry as a whole, we have different expectations about a mainstream Hollywood film or an independent British production.

## Specific Requirements

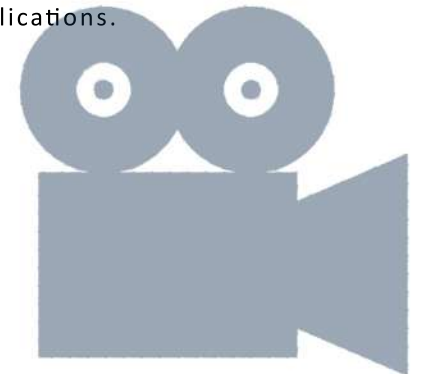
Students are expected to have gained at least a Level 4 in GCSE English Language.

## Assessment

Units 1 and 3 are assessed through coursework (assessed by the teacher). Units 2 and 4 are examined units.

## Where does it lead?

Film Studies can be used as one of a student's A-Levels which will allow them access to university to study for a Media/Film related degree or support a wide variety of other degree applications.







# CREATIVE MEDIA PRODUCTION

## BTEC Level 3

The BTEC in Creative Media Production is a practical work-related course. You will learn by completing projects and assignments that are based on realistic industry situations, activities and demands. As well as learning how media products communicate with audiences, you will develop broad based production skills needed to start your career in the media.

## Specific Requirements

Students who take this course would be expected to have at least a Level 5 grade in English Language GCSE.

## Assessment

Year 12 will be assessed with two external examinations, while Year 13 will be internally assessed and portfolio based.

## Where does it lead?

Following a Media-related degree would be one option. Students with media-related degrees can then access a whole range of graduate occupations in relevant industries.



# HISTORY

## A-Level

History is a very popular choice at A level. History is the fascinating story of human behaviour; the actions and reactions that have shaped the world we live in today. During the course you will have the opportunity to explore the origins of some of the most significant events in history and to consider their impact. The course will help you to develop your skills of analysis and interpretation, to make judgements and to communicate clearly and convincingly. These are skills which are becoming increasingly important to both universities and employers.

## Specific Requirements

A Level 5 in GCSE subjects is required for most A level programmes. Please speak to the Sixth Form subject teacher for specific details on course entry.

## Assessment

A-level - three units plus coursework

## Where does it lead?

Students go on to study a wide variety of university courses as History teaches the skills of argument, evaluation and judgement. Students may follow careers in areas such as Law, Journalism, Teaching and Management.

# GEOGRAPHY

## A-Level

Geography is a flexible subject which is especially attractive to those who want to maintain strong links with the 'real world' outside the classroom. It can be classified as either an arts, science or social science subject. A-level geographers have subsequently pursued many and varied careers. It combines well with almost all other courses on offer and will allow you to develop a wide variety of marketable skills sought after by employers. You will experience a variety of teaching styles including class discussion and group work. During the course you will be given the opportunity to do fieldwork and to collect and process data to develop your analytical skills.

## Specific Requirements

A Level 5 in GCSE subjects is required for most A level programmes. Please speak to the Sixth Form subject teacher for specific details on course entry.

## Assessment

A Level - coursework which will account for 20% of the overall grade.  
Examination 80% of the final grade.

## Where does it lead?

Many students go on to study degrees in Geography, Geology, Environmental Science. Geographers are sought after in many career areas such as Planning, Management, Journalism and Environmental work.





# RELIGIOUS STUDIES

## A-Level

Why is this subject so valuable?

- Religious Studies provides you with life skills as well as academic skills.
- It shows you understand the world, life and people – every job needs this.
- It gives meaning, purpose and understanding to life.
- Covers moral issues in the light of different religious, agnostic and atheistic viewpoints.
- Allows you to acquire and develop skills that universities and employers look for.

## Specific Requirements

No prior knowledge required for this A-Level course. Anyone of any or no religious persuasion can take it. A Level 5 or above in GCSE English is required.

## Assessment

Three written examinations. Each examination is:  
2 hours 100% of overall grade.

## Where does it lead?

The skills and knowledge you obtain will set you apart when you apply for higher education or employment. It shows you are academic and well-rounded. This subject can lead to a career in: Law, Counselling, Teaching and/or Lecturing, Criminology, Medicine, Child/Adult Psychology, Social Services, Police Force, Management, Business and many more.

# HEALTH AND SOCIAL CARE

## BTEC Level 3

This BTEC course enables you to link theory with practice in a variety of ways. The design of the course enables the student to apply their learning to a range of work related contexts. Staff delivering the course have a wide range of experience in the delivery of Health and Social Care. We can boast a number of work experience placements that allow the student the opportunity of developing professional practice.

## Specific Requirements

You must have the ability to plan study time in order to complete coursework satisfactorily, a willingness to work independently and a keen interest in the health, social care and early years sector.

## Assessment

Two exams (60% of the course) and two pieces of coursework (40% of the course) across the two years.

## What will I study?

Students go into a variety of career areas related to health and social care e.g. nursing, social work, education. It is an ideal qualification for students who want a broad background in health and social care which will allow students to progress to Higher Education and employment.



# MATHS

## A-Level

Mathematics is challenging, rewarding and fun. It is both logical and creative and is a strong subject for developing your critical thinking, reasoning and problem solving skills.

## Specific Requirements

This course is aimed at students who gained a grade 7 and above at GCSE and those who enjoy mathematics, particularly the algebraic components.

## Assessment

Exams will be taken at the end of Year 13. They consist of three 2 hour written examinations, which are all equally weighted.

## Where does it lead?

A level mathematics is a facilitating subject. It provides a firm foundation for all scientific, technical, engineering and mathematical careers.

## Careers Advice

A-level Maths and Further Maths will help facilitate entry into a number of higher education programmes and career pathways. These include careers as an Accountant, Actuary, Computer Programmer/Science, Medicine, Engineering, Investment Manager, as a Lawyer, Government Researcher, Numerical Analyst, Statistician, Teacher, Market Researcher, Banking, Space/Aircraft Industries, Consultancy, Games Developer, Construction and Geology.



# FURTHER MATHS

## A-Level

For someone that enjoys Mathematics this course provides a challenge and chance to explore new and more sophisticated mathematical concepts. Studying Further Mathematics consolidates and reinforces your standard A-Level maths work.

## Specific Requirements

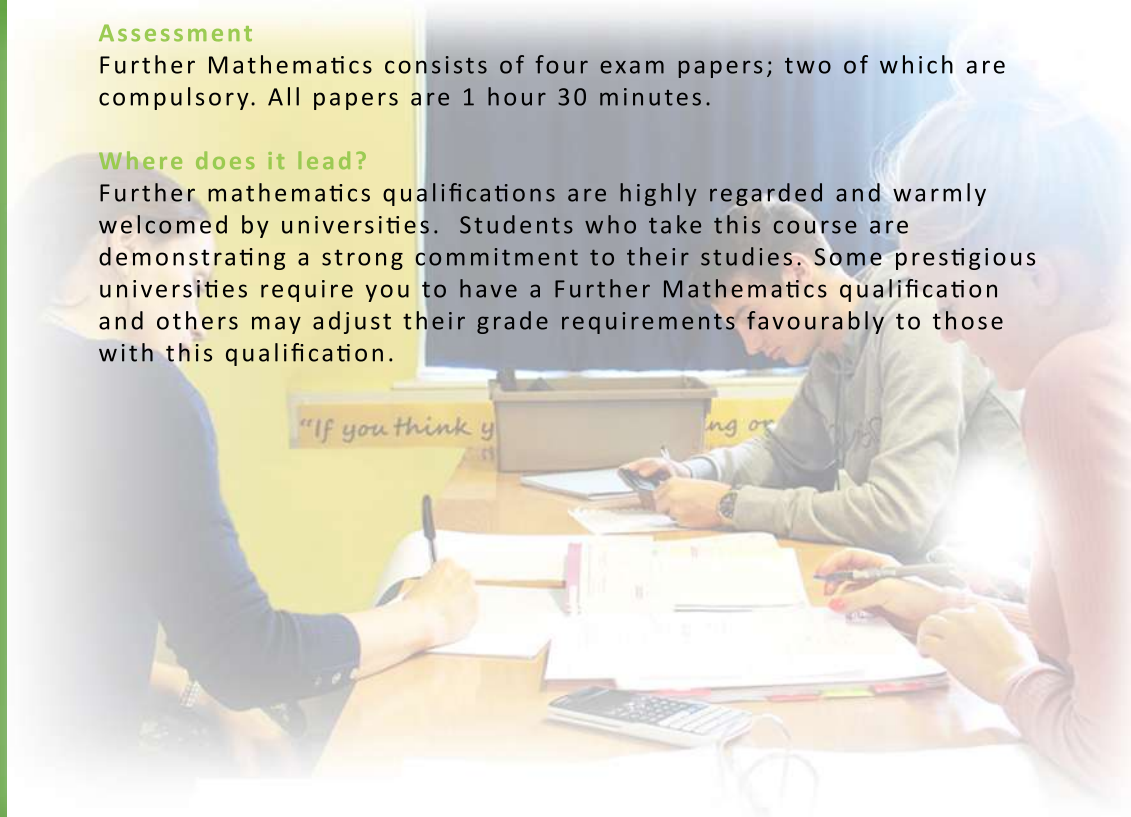
The course is aimed at students who gained a grade 8 and above at GCSE. Students are required to study A-level Mathematics.

## Assessment

Further Mathematics consists of four exam papers; two of which are compulsory. All papers are 1 hour 30 minutes.

## Where does it lead?

Further mathematics qualifications are highly regarded and warmly welcomed by universities. Students who take this course are demonstrating a strong commitment to their studies. Some prestigious universities require you to have a Further Mathematics qualification and others may adjust their grade requirements favourably to those with this qualification.





# BIOLOGY

## A-Level

Every day new discoveries are made in biological and medical science which have a dramatic impact on our lives and futures.

A-level Biology builds on your knowledge and understanding of the concepts studied at GCSE. You will be made aware of the advances in biotechnology, be able to discuss the value and responsible use of Biology in society and you will have the opportunity to sustain and develop your enjoyment of science. It can lead to careers in Medicine, Dentistry, Veterinary Science and to a wide range of university courses. If you wish to pursue a Biology course at University, then you are advised to take Chemistry at A-Level in addition.

## Specific Requirements

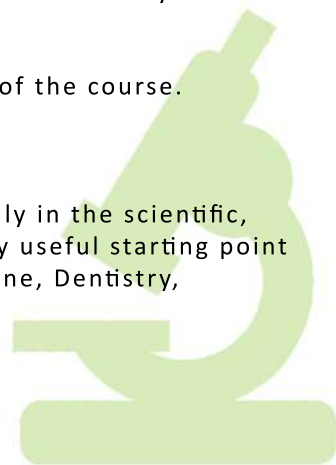
A minimum of grade 6-6 in Trilogy Science or 6-5-5 in Separate Science (the grade 6 must be in Biology) is required to study this A-Level subject. Students, after a period of induction in September, may be transferred to a more suitable course within the faculty. Please speak to the sixth form teacher for specific details on course entry.

## Assessment

A-Level - Three 2 hour examinations at the end of the course.  
Examinations 100%

## Where does it lead?

To a wide variety of university courses, especially in the scientific, medical or environmental fields. It can be a very useful starting point for many biology related careers such as Medicine, Dentistry, Environmental Studies or Science Education.



# CHEMISTRY

## A-Level

The importance of Chemistry stems from its central position among the basic sciences: on the one hand it is linked with physics through physical chemistry, and on the other with biology through biochemistry. It plays an important part in the development of such sciences as geology and physiology; it underlines many branches of technology such as metallurgy and materials science, fuel technology, textile technology and particularly chemical engineering and the harnessing of nuclear energy. Chemistry also enters into every manufacturing industry as well as medicine and agriculture for these are all concerned with the properties and changes of chemical substances.

## Specific Requirements

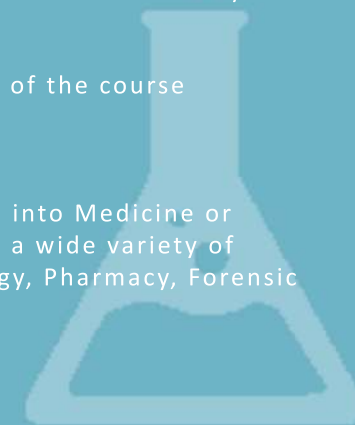
A minimum of grade 6-6 in Trilogy Science or 6-5-5 in Separate Science (the grade 6 must be in Chemistry) GCSE is required to study this A-Level subject. Students, after a period of induction in September, may be transferred to a more suitable course within the faculty. Please speak to the Sixth Form teacher for specific details on course entry.

## Assessment

A level - Three 2 hour examinations at the end of the course  
Examinations 100%

## Where does it lead?

It is a desirable course for those wishing to go into Medicine or Dentistry. Past students have gone on to study a wide variety of university courses e.g. Chemistry, Pharmacology, Pharmacy, Forensic Science, and Chemical Engineering.



# PHYSICS

## A-Level

We live in the Scientific Age, and science has dominated society over the past few centuries. In many ways Physics has demystified our understanding of the world. Galileo's astronomical observations were responsible for starting the Scientific Age, Newton built on his achievements to lay the foundations of science and maths for the next three centuries and Einstein's ideas revolutionised the way we think about space and time. Physics is one of the key disciplines of science. It can be described as the study of matter and energy, including why materials behave as they do.

## Specific Requirements

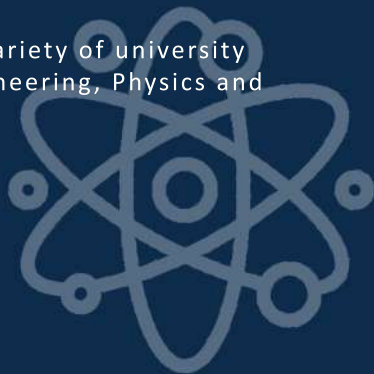
A minimum of grade 6-6 in GCSE Trilogy Science or 6-5-5 in GCSE Separate Science (the grade 6 must be in Physics and Maths) is required to study this A-level subject. Students, after a period of induction in September, may be transferred to a more suitable course within the faculty. Please speak the Sixth Form teacher for specific details on course entry.

## Assessment

A-Level - Three 2 hour examinations at the end of the course.  
Examinations 100%

## Where does it lead?

Past students have gone on to study a wide variety of university courses e.g. Civil, Mechanical, Electrical Engineering, Physics and Mathematics.



# APPLIED SCIENCE

## BTEC Level 3

BTEC Applied science offers a practical approach that can be lacking in more traditional routes, by applying learning to real life situations. Students have to undertake a number of units for which they present evidence, based on actual work and studies. This allows them to demonstrate their skills and knowledge.

## Specific Requirements

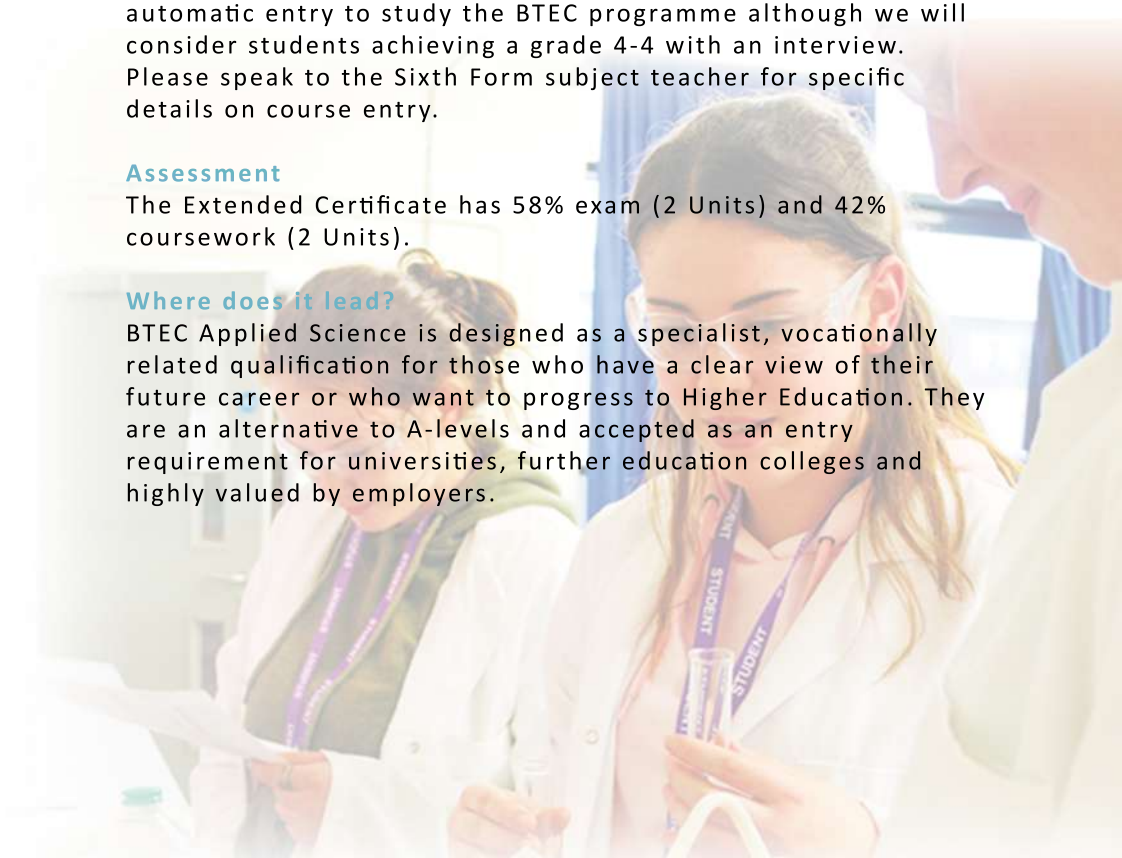
A minimum of grade 5-5 in GCSE Science is required for automatic entry to study the BTEC programme although we will consider students achieving a grade 4-4 with an interview. Please speak to the Sixth Form subject teacher for specific details on course entry.

## Assessment

The Extended Certificate has 58% exam (2 Units) and 42% coursework (2 Units).

## Where does it lead?

BTEC Applied Science is designed as a specialist, vocationally related qualification for those who have a clear view of their future career or who want to progress to Higher Education. They are an alternative to A-levels and accepted as an entry requirement for universities, further education colleges and highly valued by employers.





# PHYSICAL EDUCATION

## A-Level

Driven by the incredible success of the GB team at the 2012 and 2016 Olympic and Paralympic Games, Sport and Physical Education in the UK have never been in such a strong position.

The practical element of this course will provide you with the opportunity to appreciate and analyse practical performance both as a player and a spectator/coach. The theoretical element will provide you with a wide range of knowledge and skills that can be applied to the understanding and development of Sport at many levels.

## Specific Requirements

A Level 5 in GCSE subjects is required for most A level programmes. Please speak to the sixth form subject teacher for specific details on course entry.

## Assessment

The practical and coursework element are worth 30% of the final grade and three modular exams make up the other 70%.

## Where does it lead?

Many students go on to undertake Higher Education courses such as Sports Science, Physiotherapy or Sports Psychology, whilst others follow the Sports Development and Coaching route.



# KEY DATES

- » **Open Evening**  
**Thursday 14 November 2019**
- » **Year 11 Interviews**  
**January/February 2020**
- » **Provisional Offers Made**  
**March/April 2020**
- » **Induction Session**  
**July 2020**
- » **GCSE Results Day & Enrolment**  
**Thursday 20 August 2020**



# OFSTED

## OFSTED RATING: GOOD

“ Students are cared for well academically and emotionally. ”

“ All students progress to higher education, training or employment. ”

“ Students receive the most appropriate teaching, guidance and curriculum opportunities. ”



**Holderness Academy**  
& Sixth Form College

**Station Road, Preston, Hull, HU12 8UZ**

**[www.holderness.academy](http://www.holderness.academy)**

**@HoldernessAcad6**

**01482 899315**