

Team Health & Social care



GCSE Provisional Exam Dates

1. H & SC Component 3

Tuesday 7th May (am)

Lesson 6's are available
Mon-Weds till 4.10pm

6



Brand new **Revision guides** will be made
available to students

Revision checklists are available for all topics from class teachers.

50% A01
Recall Skills in Exam

BTEC Tech Award - Health and Social Care PLC	
Component 1 - Human Lifespan Development	
Learning aim A: Understand human growth and development across life stages and the factors that affect it.	
A1 Human growth and development across life stages	
Recall what PEEs stands for:	
State the 6 main life stages and the ages that encompass them.	
Explore physical growth and development across the life stages.	
Explore intellectual development across the life stages.	
Explore emotional development across the life stages.	
Explore social development across the life stages.	
A2 Factors affecting growth and development	
Explore physical factors that can affect an individual's growth and development.	
Explore social and cultural factors that can affect an individual's growth and development.	
Explore economic factors that can affect an individual's growth and development.	
Learning aim B: Investigate how individuals deal with life events	
B1 Different types of life event	
Explore the physical events that can impact on people's PEEs development.	
Explore the relationship changes that can impact on people's PEEs development.	
Explore the life circumstances that can impact on people's PEEs development.	
B2 Coping with change caused by life events	
Explore how individuals can adapt or be supported through changes caused by life events.	
Describe some sources of support.	
Describe some types of support.	
Component 2 - Health and Social Care Services and Values	
Learning aim A: Understand the different types of health and social care services and barriers to accessing them.	

SENECA
250,000 Students
Learning 2x Faster

Insights
Course: Biology: High School
Metric: Average score
Date range: Last 30 days
From: 11/3/2020
To: 12/3/2020

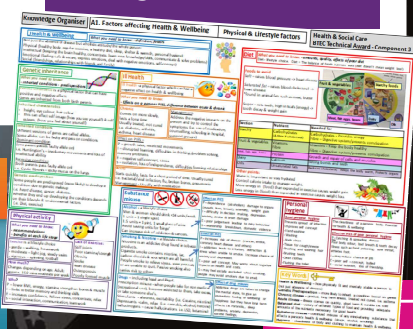
First name	Last name	1.4.1	1.4.2	1.4.3	1.5.1	1.5.2	1.5.3	1.5.4
Marie	Deckow	27%	54%	58%	51%	72%	71%	79%
Cole	Trantow	57%	91%	72%	45%	49%	N/A	13%
Blaze	Towne	79%	98%	N/A	N/A	100%	47%	76%
Vida	Denesik	46%	N/A	55%	51%	55%	80%	32%
Salon	Hills	43%	86%	46%	46%	49%	95%	42%
Destiney	Pouros	37%	N/A	48%	36%	47%	67%	N/A
Ashlan	Herman	54%	N/A	60%	27%	64%	N/A	21%
Jorge	Bogen	N/A	43%	N/A	72%	38%	38%	N/A
Eida	Maggio	52%	76%	58%	46%	53%	49%	N/A
Fallon	Dore	57%	48%	61%	46%	N/A	16%	N/A

Smart learning
Boost your memory strength with our smart algorithm's suggestions
1.1.1 Types of Cells
1.1.2 Properties of Prokaryotes
1.1.3 Standard Form
7.1.1 Communities
7.1.2 Communities 2

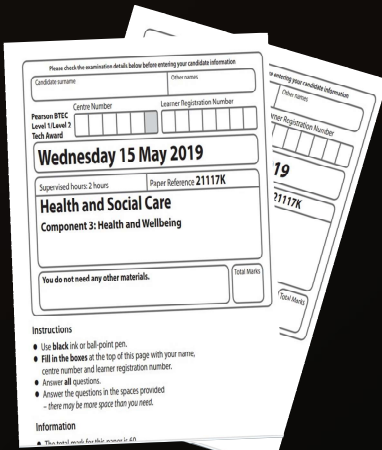
Regular retrieval practice
- improves your GCSE by a whole grade.
Smart Learning Mode tells you what to learn and when to maximise your progress for a subject. The smart algorithm will use insights from cognitive neuroscience & AI to generate recommendations of which sections you should study for a particular course.

Revision mats can be obtained from class teachers for all topics.

66% of the course is assignment based



Bitesize: Staff can also recommend various revision apps some of which are free like bbc bitesize while others include some in-app charges.



Past papers are available from class teachers.

Core practical videos from the Exam board on Youtube

Scan the QR code and watch the short videos summarising the Core practical's you completed.



The final exam is worth 33% of your grade

SCAN ME